



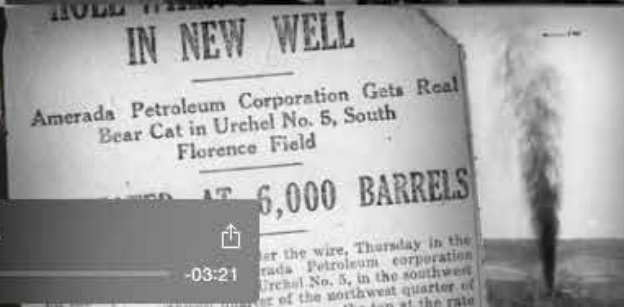
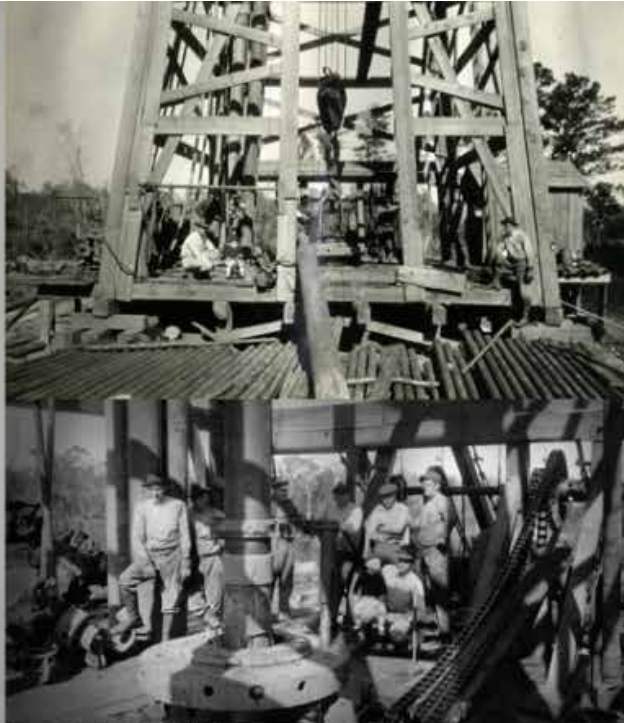
[Hess.com](https://www.hess.com)

A PIONEER OF
SEISMIC
TECHNOLOGY

ONSHORE OKLAHOMA 1919

Amerada





00:11 | [play/pause] | [share] | -03:21



HESS

FOUNDED IN

NEW JERSEY

1933

BY

LEON HESS

WITH ONE FUEL TRUCK



HESS

FOUNDED IN

NEW JERSEY

1933

BY

LEON HESS

WITH ONE

F



TODAY



A LEADING

GLOBAL

INDEPENDENT

E&P COMPANY



FOCUSED IN

5 STRATEGIC AREAS



PRODUCING

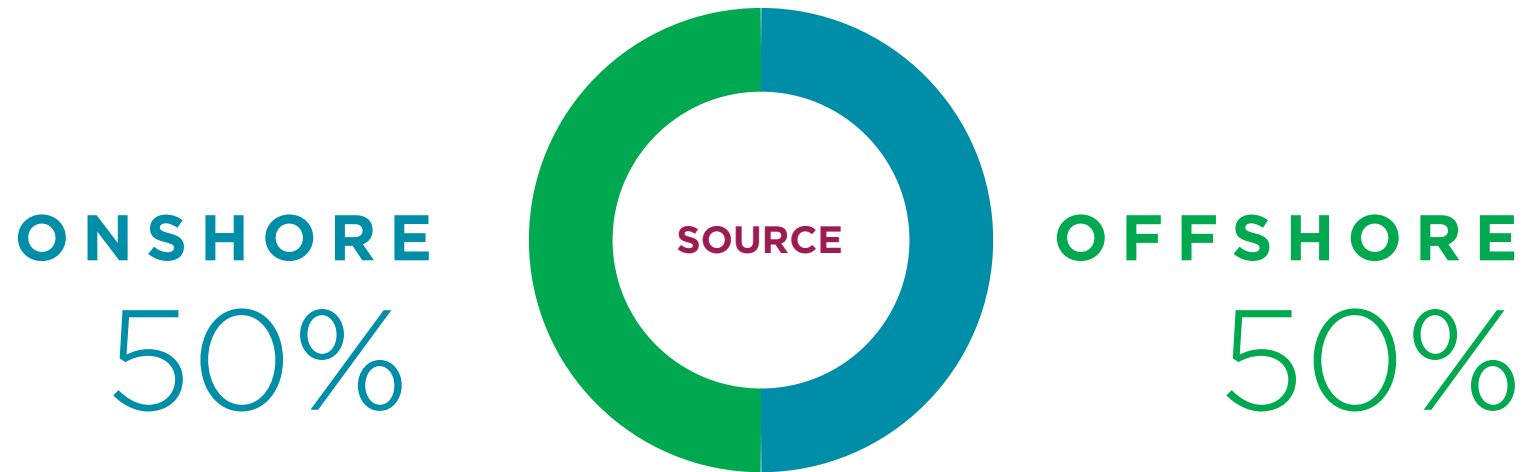
NATURAL GAS
24%



LIQUIDS
76%



PRODUCING



2014 ACTUAL E&P INVESTMENT
(SOURCE Q4 2014 ACTUAL E&P INVESTMENT)

PRODUCING

INTERNATIONAL
50%



U.S.
50%

WITH
SUSTAINABLE
OPERATIONS

AS ACKNOWLEDGED BY



ONSHORE
BAKKEN SHALE

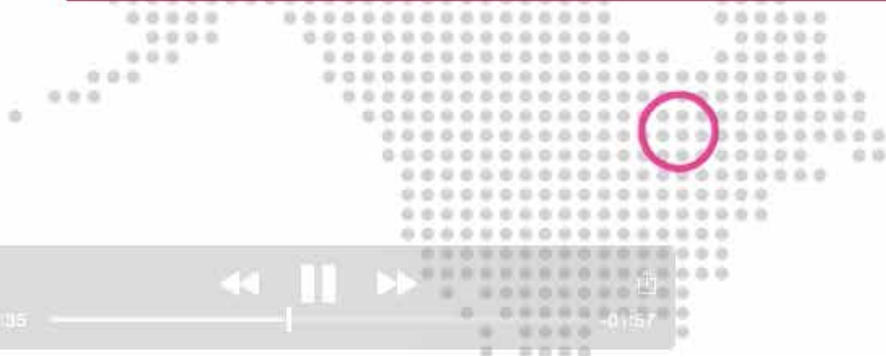
A TOP PRODUCER

LEADING WELL COST & PRODUCTIVITY



ONSHORE UTICA SHALE

CORE ACREAGE
POSITION IN WET
GAS WINDOW



ONSHORE

PERMIAN

ENHANCED OIL RECOVERY



EXPLORATION WEST AFRICA



GHANA

CONSECUTIVE
DISCOVERIES
DEEPWATER OFFSHORE

7



EXPLORATION ASIA-PACIFIC



NORTH MALAY BASIN

GULF OF THAILAND

DISCOVERED
GAS FIELDS
OFFSHORE

9

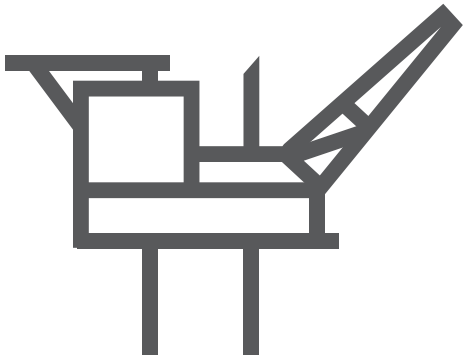


EXPLORATION BUILDING A
**WORLD CLASS
PORTFOLIO**

GULF OF MEXICO ▶ SICILY

GUYANA ▶ STABROEK

NOVA SCOTIA ▶ LEVERAGING
DEEPWATER
CAPABILITY



OFFSHORE

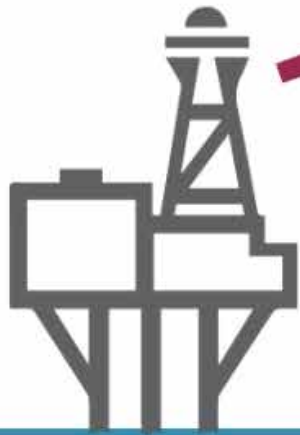
GULF OF MEXICO



8TH 
LARGEST
PRODUCER

OFFSHORE

GULF OF MEXICO



12TH 

LARGEST
ACREAGE HOLDER



OFFSHORE

GULF OF MEXICO



2000

BLOCKS

INVENTORY
TO EXPLORE

OFFSHORE
GULF OF MEXICO

TUBULAR BELLS

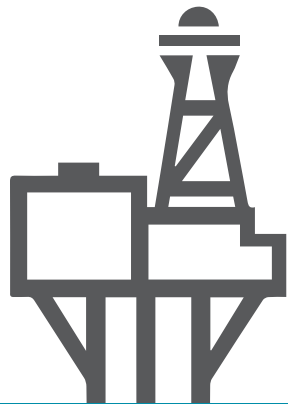


1ST
PRODUCTION

NOVEMBER 2014



OFFSHORE
GULF OF MEXICO

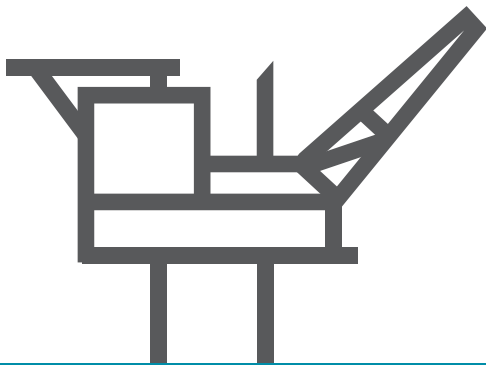


FIRST
PRODUCTION
2018
STAMPEDE



OFFSHORE GULF OF MEXICO

TUBULAR BELLS



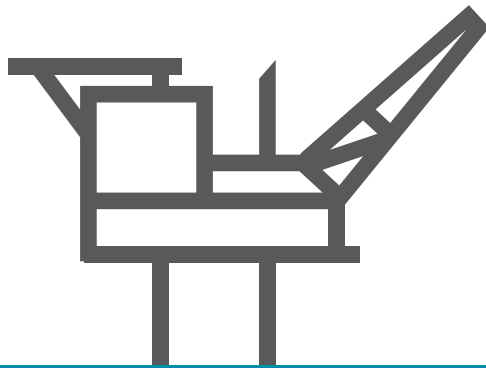
HESS
OPERATOR
57%

CHEVRON
CO-OWNER
43%



OFFSHORE GULF OF MEXICO

TUBULAR BELLS



SAFELY & ON BUDGET

JUST 3 YEARS FROM
SANCTION TO FIRST OIL



TUBULAR BELLS

TOP QUARTILE DRILLING

24,000'

BELOW SURFACE &

10,000' OF SALT

TUBULAR BELLS

SUBSEA INNOVATION: UTILIZING THE WORLD'S MOST ADVANCED DEEPWATER VERTICAL TREE SYSTEM



CONGER

SUBSEA INNOVATION
TIEBACK:

**FIRST 15K
SUBSEA DEVELOPMENT IN**

GOM

CONGER

SUBSEA INNOVATION:
INFRASTRUCTURE

IN PLANNING PHASE FOR

NEW WELL EXPANSION

TO TIE INTO EXISTING INFRASTRUCTURE

15,000 PSI EVDT TREE
FROM FMC

OFFSHORE WEST AFRICA

EQUATORIAL GUINEA

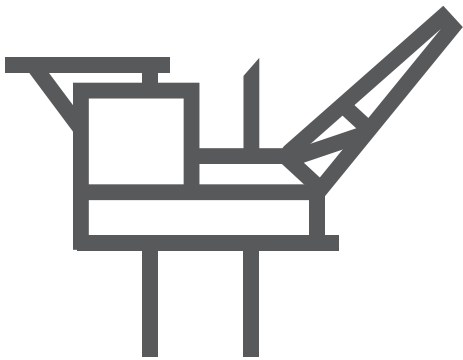


SEISMIC FOR HIGH
VALUE DRILLING
OPPORTUNITIES



OFFSHORE WEST AFRICA

EQUATORIAL GUINEA



WORLD CLASS
EXPLOITER-
SUBSEA
INNOVATOR

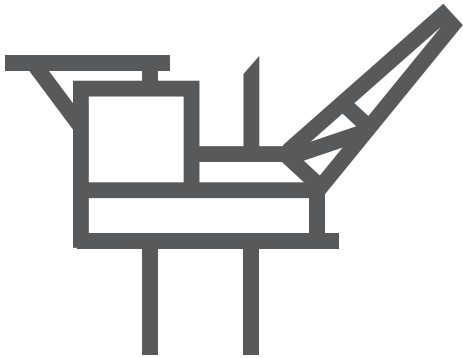


OFFSHORE WEST AFRICA

CEIBA

FIRST OPERATIONAL
MULTIPHASE PUMP

ONE OF THE FIRST
DEEPWATER
PIPELINE REPLACEMENT PROJECTS



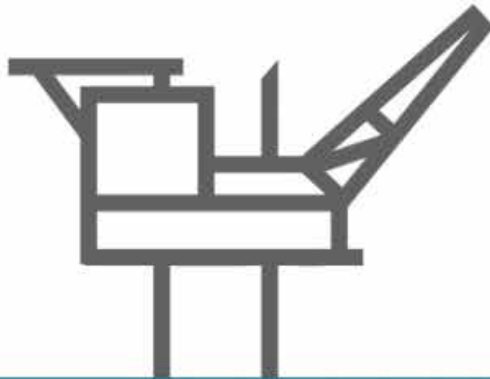
OFFSHORE NORTH SEA

DENMARK

6TH LARGEST PRODUCER
SOUTH ARNE

NORWAY

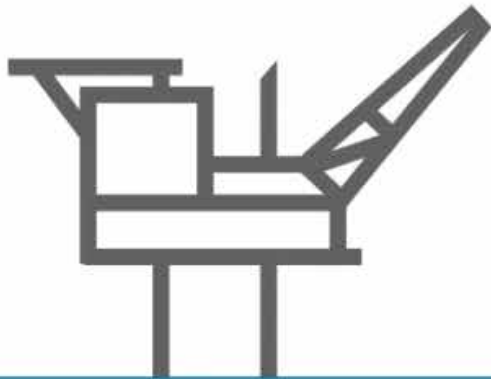
MAJORITY OWNER
VALHALL



**LONG LIFE,
HIGH MARGIN**

OFFSHORE
ASIA-PACIFIC

MALAYSIA-THAILAND



JOINT
DEVELOPMENT
AREA

LOW COST, LONG LIFE GAS
RESERVES, OIL-LINKED PRICING



DISCOVER
HESS AND OUR PLANS
FOR THE FUTURE





Hess.com