

Itinerary

FEBRUARY 1, 2024

- 4:30AM** Depart hotel
- 5:00AM** Check-in at Bristow heliport
- 6:00AM** Flight safety briefing
- 6:30AM** Helicopter departs to Baldpate
- 8:00AM** Baldpate safety briefing
- 8:30AM** Baldpate presentation and tour review
- 9:30AM** Baldpate tour
- 11:00AM** Lunch
- 11:30AM** Debrief/closing session
- 12:30PM** Helicopter departs from Baldpate
- 1:30PM** Helicopter lands at Bristow heliport
- 1:45PM** Vehicles depart for MSY
- 5:00PM** MSY flight departs for Houston



Hess.com

FEBRUARY 1, 2024



TRAVEL GUIDE

Baldpate Site Visit



SAFETY

HELICOPTER

- ▶ Follow pilot's direction
- ▶ Approach helicopter from side to avoid rotors
- ▶ **Don't:** Approach helicopter from front or rear

GENERAL

- ▶ If you see a hazard, point it out
- ▶ If you see anything unsafe, stop the job
- ▶ Know your muster station and lifeboat

EVERYONE
EVERYWHERE
EVERY DAY
HOME SAFE

Table of Contents

- 1** Itinerary
- 2** Safety do's and don'ts
- 3** Hess Rules
- 4** Helicopter safety, details and seating
- 6** Hess Gulf of Mexico overview
- 8** Flight path
- 10** Baldpate facts



Itinerary

FEBRUARY 1, 2024

- 4:30AM** Depart hotel
- 5:00AM** Check-in at Bristow heliport
- 6:00AM** Flight safety briefing
- 6:30AM** Helicopter departs to Baldpate
- 8:00AM** Baldpate safety briefing
- 8:30AM** Baldpate presentation and tour review
- 9:30AM** Baldpate tour
- 11:00AM** Lunch
- 11:30AM** Debrief/closing session
- 12:30PM** Helicopter departs from Baldpate
- 1:30PM** Helicopter lands at Bristow heliport
- 1:45PM** Vehicles depart for MSY
- 5:00PM** MSY flight departs for Houston



Safety do's & don'ts

GENERAL

- ▶ If you see a hazard, point it out
- ▶ If you see anything unsafe, stop the job
- ▶ Report any incident/injury to facility leadership
- ▶ **Don't: Let an unsafe act go unnoticed**

HELICOPTER

- ▶ Follow pilot's instructions
- ▶ Hearing protection must be worn at all times
- ▶ Place your phone in 'airplane mode' before boarding helicopter
- ▶ Approach helicopter from side
- ▶ **Don't: Approach helicopter from front or rear**
- ▶ **Don't: Wear loose items that could fly off near the helicopter**

FACILITY

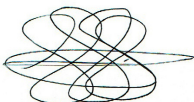
- ▶ Know your alarms and muster station
- ▶ **Don't: Take your phone outside of quarters**
- ▶ Be aware of hazards, e.g., overhead lifts
- ▶ Listen for safety announcements
- ▶ Always use handrails on stairs

EVERYONE
EVERYWHERE
EVERY DAY
HOME SAFE



STOP WORK AUTHORITY

I, THE UNDERSIGNED, HEREBY COMMIT TO SUPPORT YOUR STOP WORK AUTHORITY, AND WILL ENSURE THAT THERE ARE NO REPERCUSSIONS TO YOU FOR ANY STOP WORK INTERVENTION THAT YOU INITIATE IN GOOD FAITH. PLEASE CONTACT ME ANYTIME THAT YOU NEED MY ASSISTANCE IN THIS REGARD.



GERBERT SCHOONMAN
SVP, PRODUCTION
713.496.4678
GSCHOONMAN@HESS.COM

HESS RULES



Energy Isolation

Verify isolation and zero energy before work begins.



Lifting and Hoisting

Plan lifting operations and control the area.



Working at Heights

Protect yourself against a fall when working at height.



Confined Space Entry

Obtain authorization before entering a confined space.



Hot Work

Control flammables and ignition sources.



Excavation and Trenching

All excavation and trenching work greater than 4 feet (1.2 meters) deep requires written approval.



Land Transportation

Follow safe driving rules.



Safety System Bypass

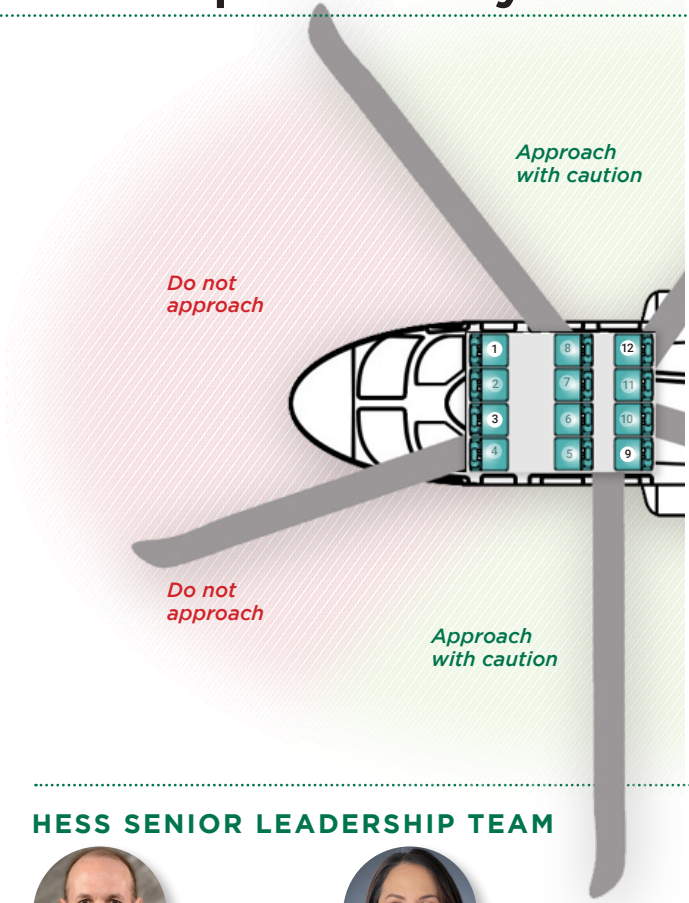
Obtain authorization before overriding or disabling safety controls.



Line of Fire including Dropped Object Prevention

Keep yourself and others out of the line of fire.

Helicopter safety and



HESS SENIOR LEADERSHIP TEAM



Brock Hajdik
Vice President,
Gulf of Mexico (GOM)
21 YEARS AT HESS
31 YEARS IN INDUSTRY
Seat position: 1

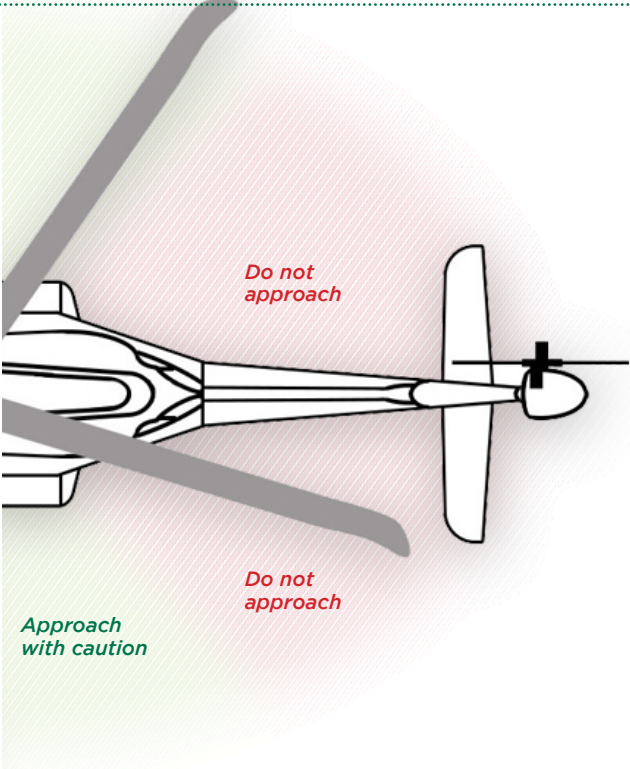


Alisa Tijerina
Director,
GOM Operations
1.5 YEARS AT HESS
20 YEARS IN INDUSTRY
Seat position: 12

AIRCRAFT: AW139



seating positions



Murray Jackson
Director, GOM MR&I,
Technology, Data and
Analytics
15 YEARS AT HESS
26 YEARS IN INDUSTRY
Seat position: 3



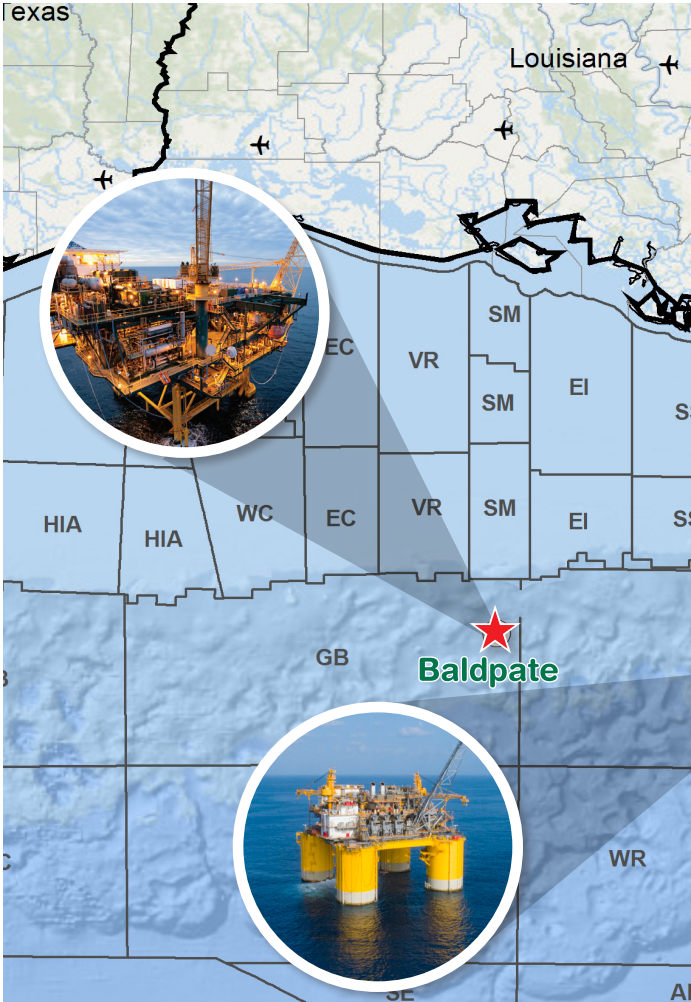
Milton Chaves
Senior Manager, GOM
Operations, Baldpate
16 YEARS AT HESS
16 YEARS IN INDUSTRY
Seat position: 9

KEY FACTS

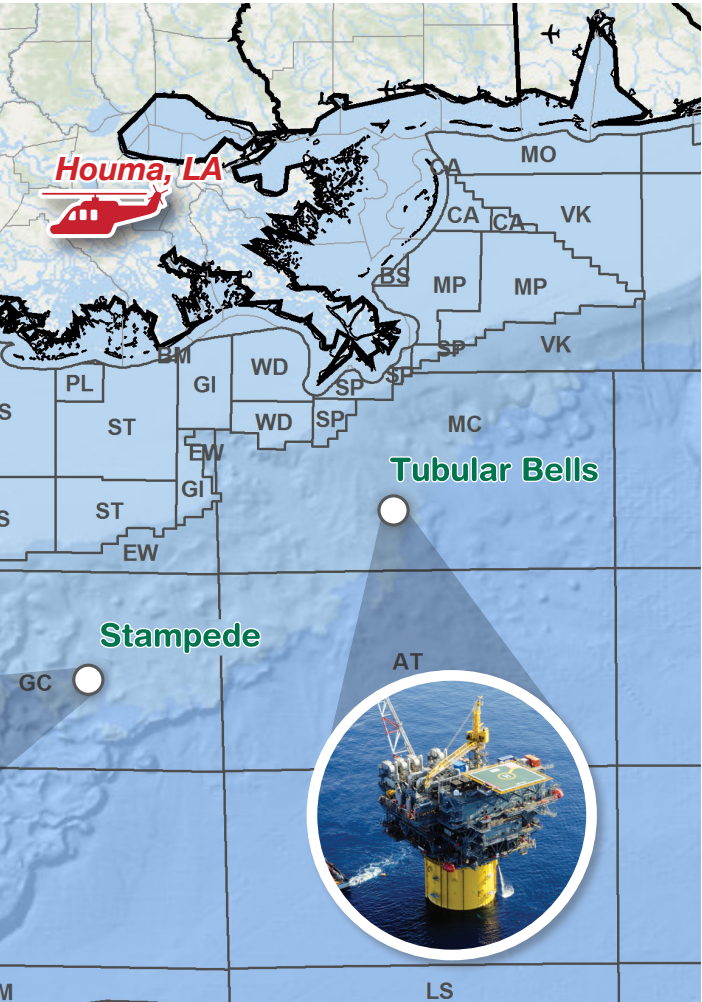
The Leonardo AW139 is equipped with the latest safety features and sets the standard for its class.

- ▶ Bristow has over 78,000 hours flown since 2015, transporting 53,000 passengers annually.
- ▶ Range: ~450 Miles
- ▶ Cruise speed: 146 knots (168 mph)

Hess Gulf of Mexico



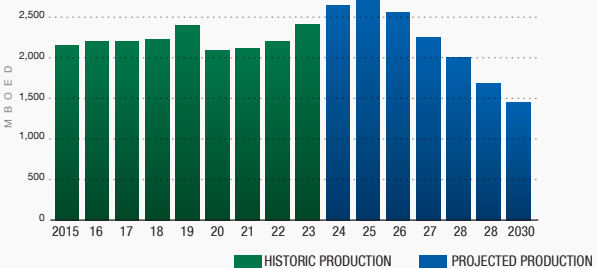
overview



GULF OF MEXICO (GOM) PRODUCTION FACTS

- ▶ Hess is one of the largest gross operators in the GOM based on gross operated production.
- ▶ Hess has 7 fields in GOM; Operated: Stampede, Tubular Bells, Baldpate, Penn State, Conger, Esox; Non-Operated: Llano
- ▶ More than 85 leasehold blocks in GOM

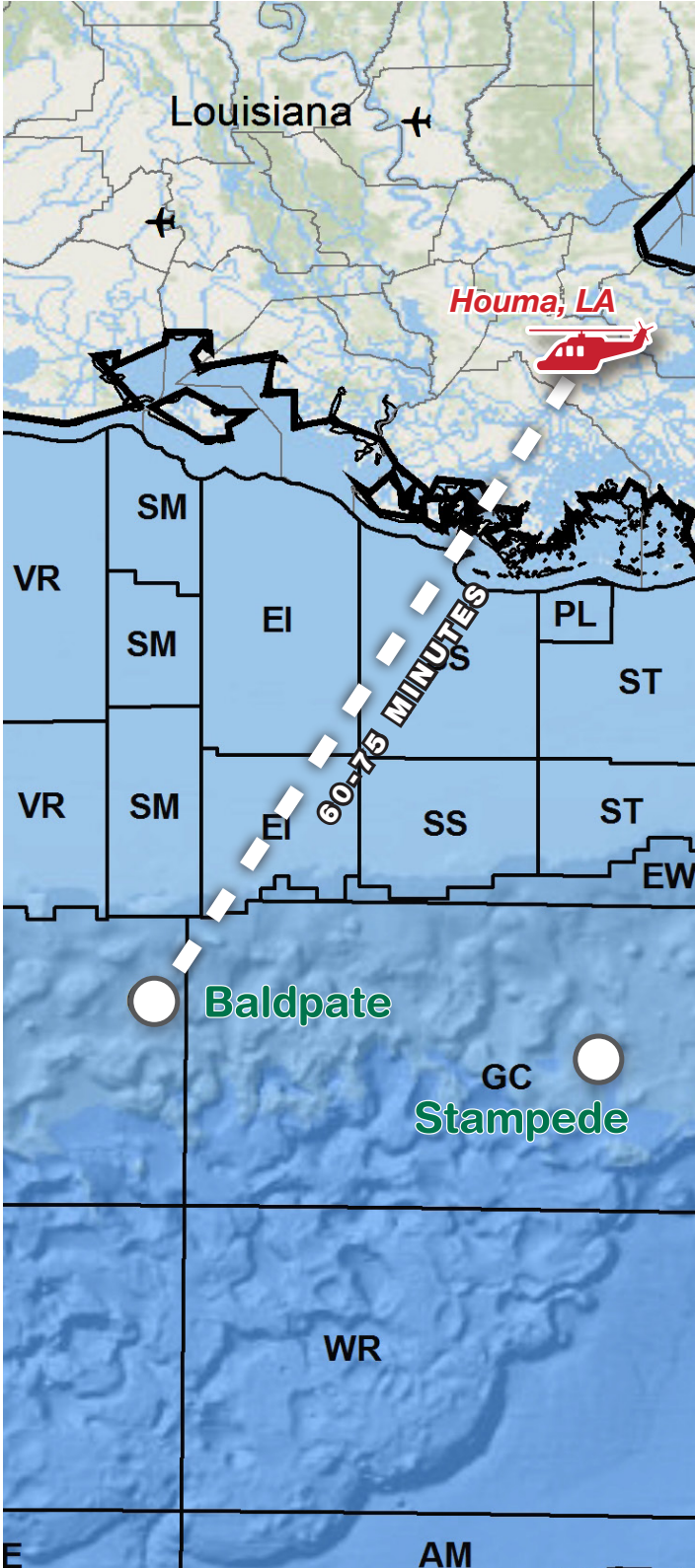
GOM PRODUCTION

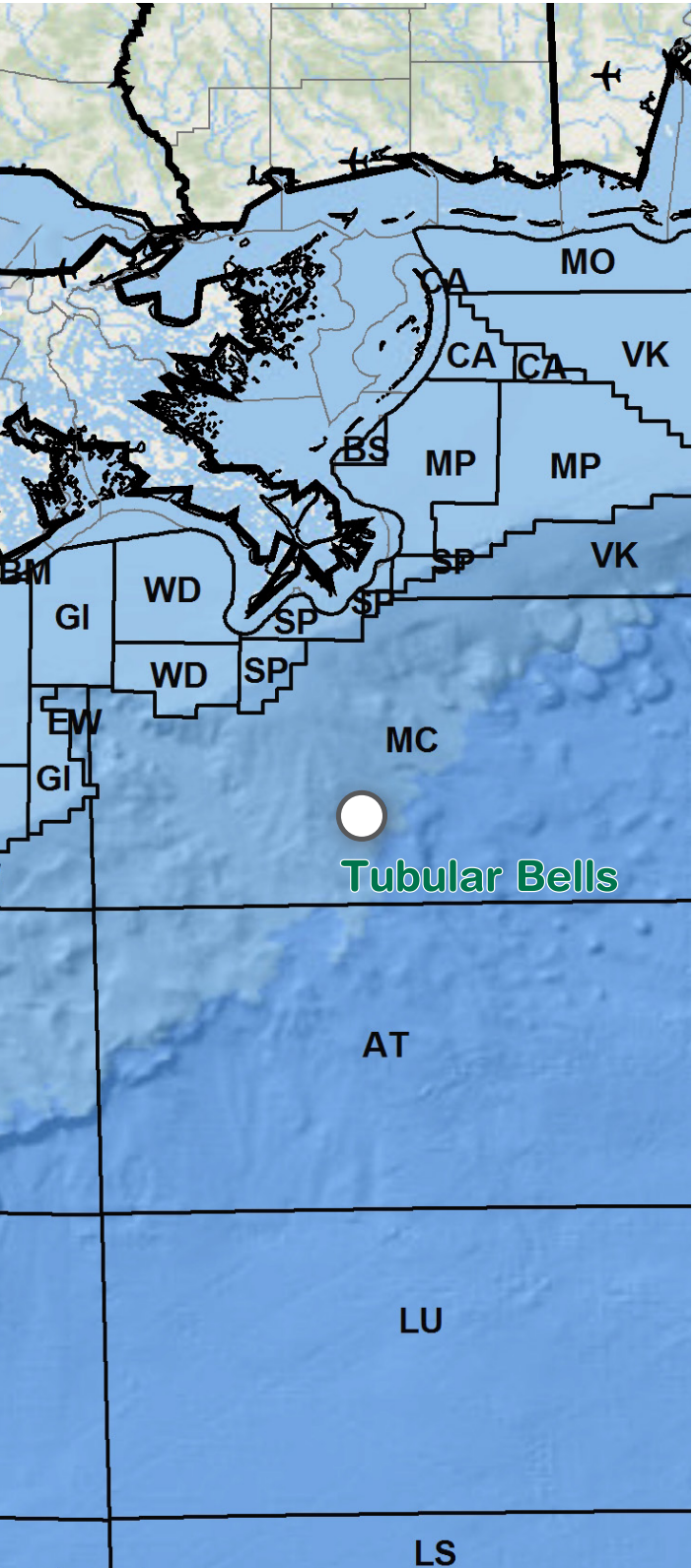


Source: Wood Mackenzie

Flight path

BRISTOW HELIPORT TO BALDPATE





Baldpate facts



ASSET DETAILS

Discovery	1991
Sanctioned	Nov 1995
First Oil	Sept 1998
Water Depth	1,650 ft
Hess Production Wells	5
3 RD party production wells	2



FACILITY FACTS

Facility type	Compliant tower*
Key platform dimensions	180 ft x 130 ft
Oil processing capacity	60 MBOPD
Gas processing capacity	200 MMSCFD
Water processing capacity	75 MBWPD
Living quarters accommodations	72

* World's first freestanding compliant tower platform