

Itinerary

MAY 2, 2023

- 6:30AM** Light breakfast / change into PPE
- 7:00AM** Trip overview and helicopter safety briefing
- 8:00AM** Helicopter departs to Stampede
- 9:45AM** Stampede safety briefing
- 10:15AM** Facility presentations and tour overview
- 11:00AM** Lunch with Stampede team / control room tour
- 12:00PM** Stampede tour
- 1:15PM** Debrief / Q&A
- 1:30PM** Load helicopter and depart for Galliano



Hess.com

MAY 2, 2023



TRAVEL GUIDE

Stampede Facility Visit



SAFETY

HELICOPTER

- ▶ Follow pilot's direction
- ▶ Approach helicopter from side to avoid rotors
- ▶ **Don't:** Approach helicopter from front or rear

GENERAL

- ▶ If you see a hazard, point it out
- ▶ If you see anything unsafe, stop the job
- ▶ Know your muster station and lifeboat

EVERYONE
EVERYWHERE
EVERY DAY
HOME SAFE

Table of Contents

- 1** Itinerary
- 2** Safety do's and don'ts
- 3** Hess Rules
- 4** Helicopter safety and seating positions
- 6** Hess Gulf of Mexico overview
- 8** Flight path
- 10** Stampede facts
- 12** Stampede team and facility schematic
- 14** Subsea infrastructure schematic



Itinerary

MAY 2, 2023

- 6:30AM** Light breakfast / change into PPE
- 7:00AM** Trip overview and helicopter safety briefing
- 8:00AM** Helicopter departs to Stampede
- 9:45AM** Stampede safety briefing
- 10:15AM** Facility presentations and tour overview
- 11:00AM** Lunch with Stampede team / control room tour
- 12:00PM** Stampede tour
- 1:15PM** Debrief / Q&A
- 1:30PM** Load helicopter and depart for Galliano



Safety do's & don'ts

GENERAL

- ▶ If you see a hazard, point it out
- ▶ If you see anything unsafe, stop the job
- ▶ Report any incident/injury to facility leadership
- ▶ **Don't:** Let an unsafe act go unnoticed

HELICOPTER

- ▶ Follow pilot's instructions
- ▶ Hearing protection must be worn at all times
- ▶ Place your phone in 'airplane mode' before boarding helicopter
- ▶ Approach helicopter from side
- ▶ **Don't: Approach helicopter from front or rear**
- ▶ **Don't: Wear loose items that could fly off near the helicopter**

FACILITY

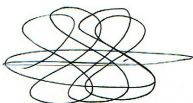
- ▶ Know your alarms and muster station
- ▶ Be aware of hazards, e.g., overhead lifts
- ▶ Listen for safety announcements
- ▶ Always use handrails on stairs

EVERYONE
EVERYWHERE
EVERY DAY
HOME SAFE



STOP WORK AUTHORITY

I, the undersigned, hereby commit to support your Stop Work Authority, and will ensure that there are no repercussions to you for any stop work intervention that you initiate in good faith. Please contact me anytime that you need my assistance in this regard.



Gerbert Schoonman
SVP, Production
713.496.4678
GSchoonman@hess.com

HESS RULES



Energy Isolation

Stored energy sources shall be identified, isolated, tested and communicated to appropriate personnel before work shall proceed.



Lifting and Hoisting

Use only locally qualified operators and appropriate equipment for all mechanical lifting, hoisting and rigging operations.



Working at Heights

Personal fall protection equipment must be worn when working 6 feet (1.8 meters) or higher above ground.



Confined Space Entry

Confined spaces shall not be entered unless authorized by written permit.



Hot Work

A written work permit is required for all hot work outside of designated safe areas.



Excavation and Trenching

All excavation and trenching work greater than 4 feet (1.2 meters) deep requires written approval.



Land Transportation

Identify all driving threats associated with motor vehicle activity prior to putting motor vehicle in motion.



Safety System Bypass

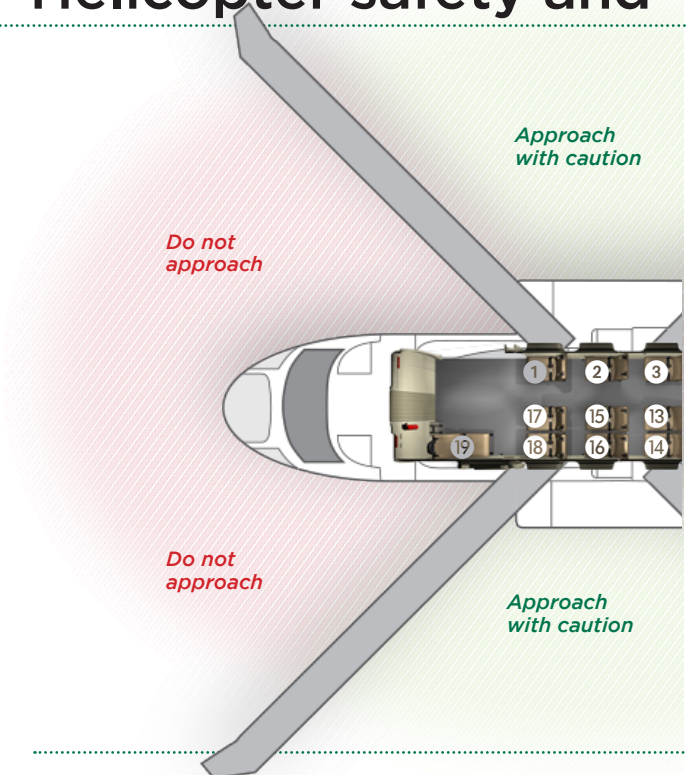
Authorization shall be attained before bypassing safety systems.



Dropped Object Prevention

Appropriate precautions shall be taken in every task to identify, eliminate or control potential dropped objects.

Helicopter safety and



HESS SENIOR LEADERSHIP TEAM



Gerbert Schoonman
Senior Vice President,
Global Production
12 YEARS AT HESS
32 YEARS IN INDUSTRY



Brock Hajdik
Vice President, Gulf of Mexico
20 YEARS AT HESS
30 YEARS IN INDUSTRY

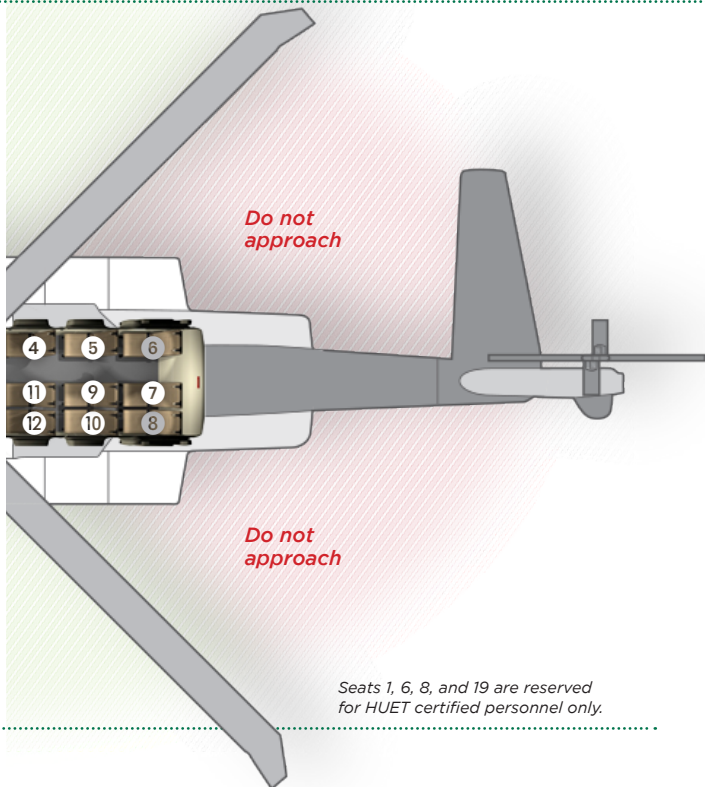


Alex Mistri
Vice President, External Affairs
6 YEARS AT HESS
27 YEARS IN GOVERNMENT/PUBLIC POLICY

AIRCRAFT: SIKORSKY S92



seating positions



Floyd Peterson

Senior Director, GOM Operations

32 YEARS AT HESS

36 YEARS IN INDUSTRY



Joel Noyes

Director, Government and External Affairs

10 YEARS AT HESS

20 YEARS IN GOVERNMENT/
PUBLIC POLICY



Alisa Tijerina

Senior Operations Manager, Stampede

1 YEAR AT HESS

19 YEARS IN INDUSTRY

KEY FACTS



The S92 is the most reliable heavy helicopter in industry: best-in-class safety record, latest generation technology; The fleet recently surpassed 2,000,000 flight hours

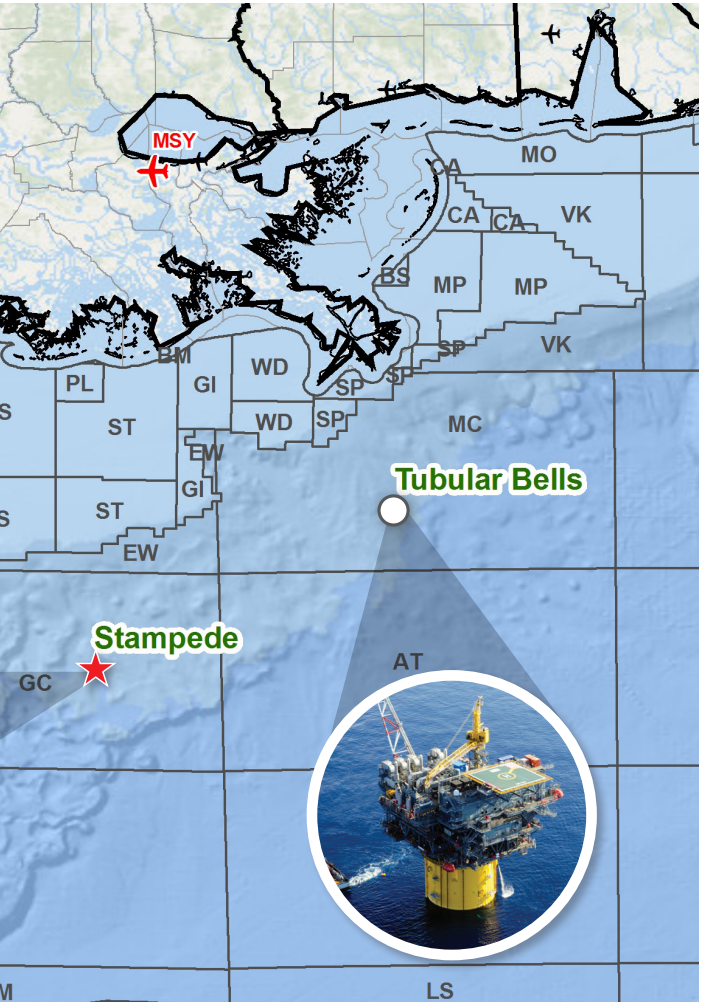
- ▶ Bristow has flown over 52,000 hours in the S92 since its introduction in the Gulf of Mexico
- ▶ Performance: the S92 is a highly reliable aircraft, delivering greater than 99% in On Time Departures
- ▶ The one-way S92 range is ~200 miles, carrying in excess of 4,800 lbs of payload, making it a tremendous asset for passenger movement
- ▶ Cruise speed of 147 knots (170 mph)

Hess Gulf of Mexico



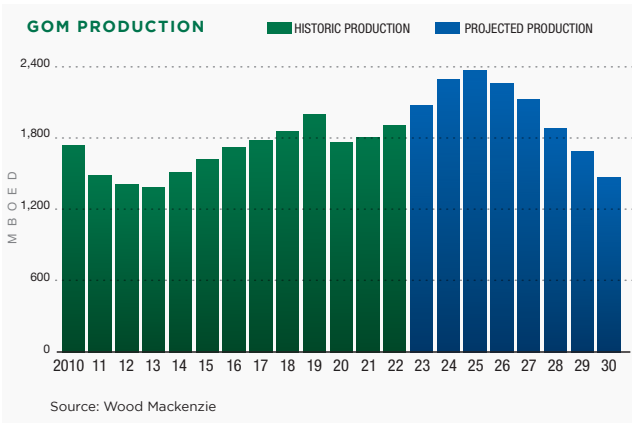
HESS GULF OF MEXICO

- ▶ Hess has 7 fields in Gulf of Mexico
 - Operated: Stampede, Tubular Bells, Baldpate, Penn State, Conger, Essox
 - Non-Operated: Llano
- ▶ Hess is one of the largest operators in the Gulf of Mexico based on gross operated production
- ▶ More than 100 leasehold blocks in the Gulf of Mexico
- ▶ Greater than \$2.6 billion invested 2015-2022 USD



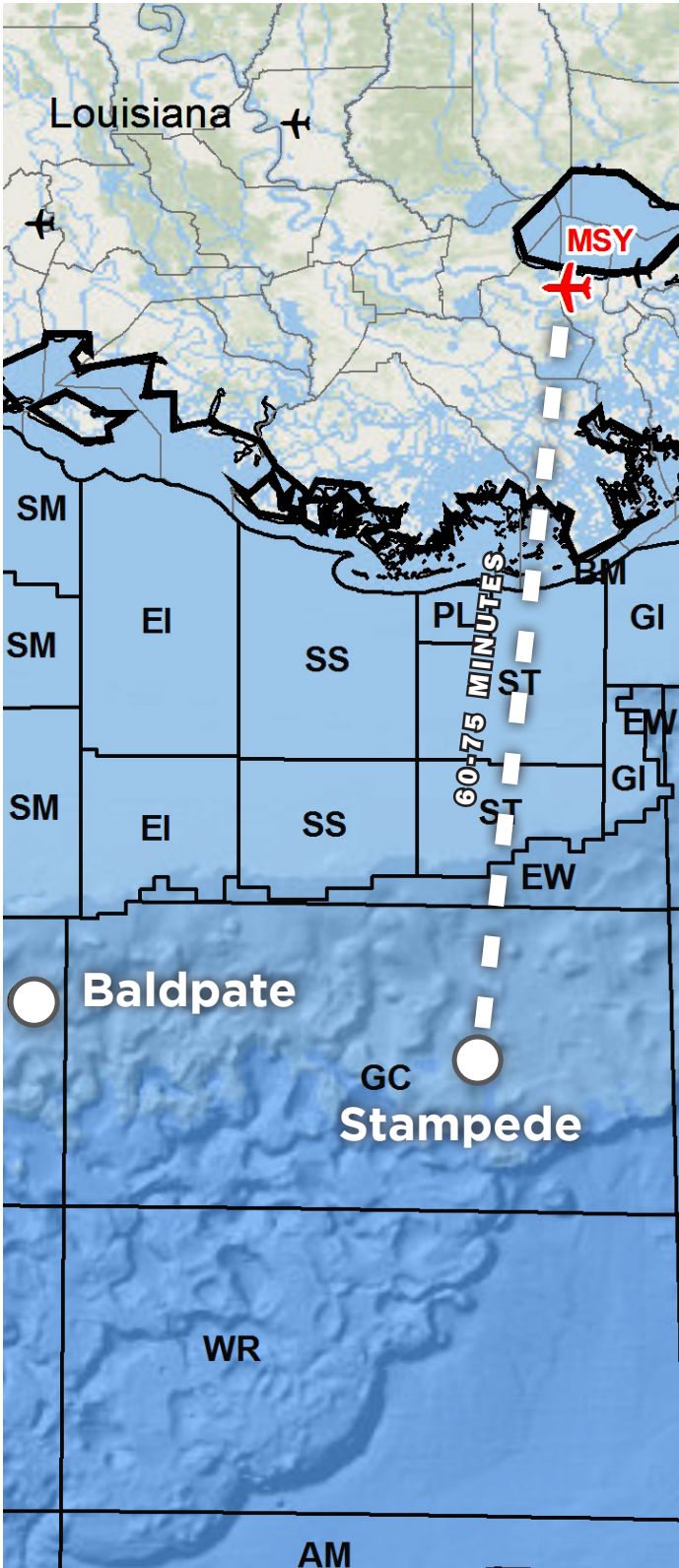
GULF OF MEXICO PRODUCTION FACTS

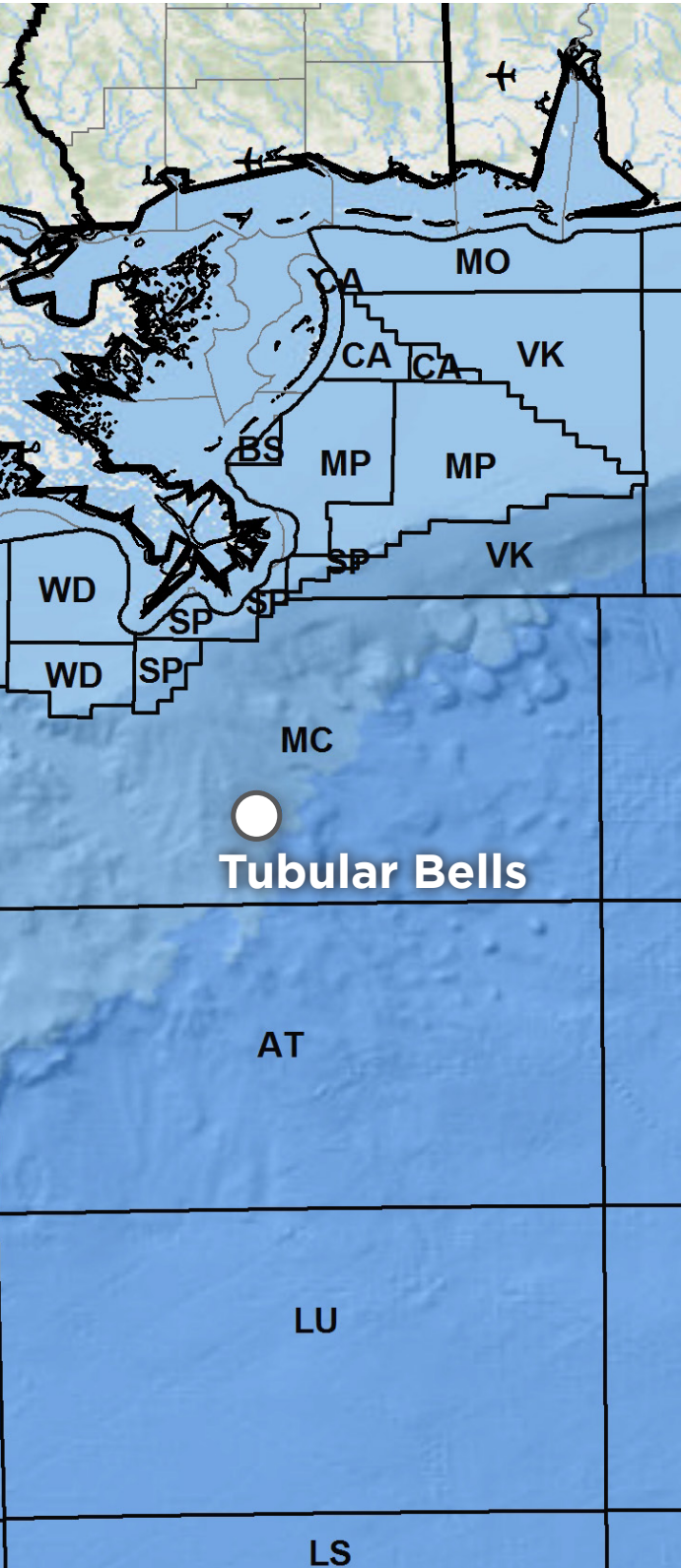
- ▶ Gulf of Mexico production estimated at 2 MMBOED in 2023.



Flight path

MSY TO STAMPEDE





Stampede facts



ASSET DETAILS

Discovery	2005
Project Sanction	Oct 2014
First Oil	Jan 2018
Water Depth	3,600 ft
Reservoir Depth	32,000 ft
2P Reserves	173 MMBOE
Production Wells	7
Injection Wells	4





TLP FACTS

TLP Key Dimensions	243 ft L, 204 ft W, 369 ft H
Weight of TLP	74 million pounds
Distance from Nearest Well	1.5 miles
Oil Processing Capacity	80 MBOD
Gas Processing Capacity	40 MMCFD
Water Injection Capacity	100 MBWID
Living Quarters Accommodations	80

TLP HIGHLIGHTS

- ▶ Winner of 2018 S&P Platts Global Energy Award for Construction Project of the Year
- ▶ 4,500 workers with over 14 million man-hours required to complete the facility

Stampede team and

TEAM



Chad Melancon

Senior Operations Lead

7 YEARS WITH HESS

26 YEARS INDUSTRY EXPERIENCE



Ben Pascalar

Process Engineering Advisor

9 YEARS WITH HESS

13 YEARS INDUSTRY EXPERIENCE

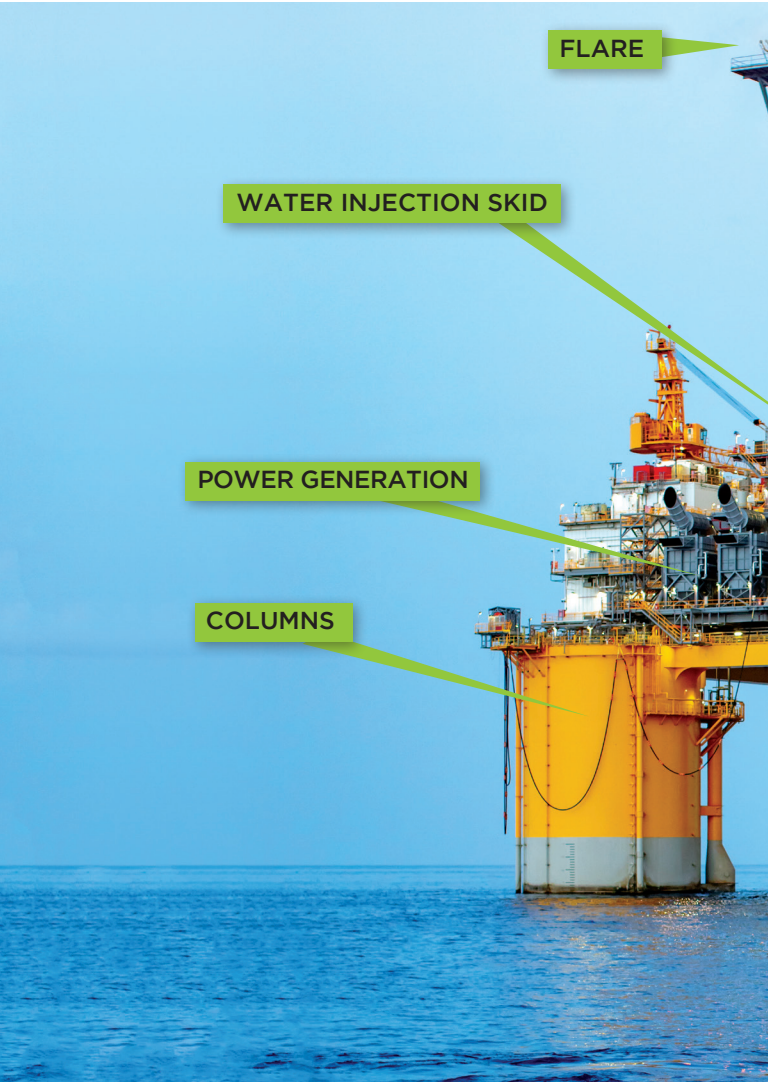


Tom Smith

EHS Specialist

6 YEARS WITH HESS

16 YEARS INDUSTRY EXPERIENCE



FLARE

WATER INJECTION SKID

POWER GENERATION

COLUMNS

facility schematic



Rick Besecker

Process Specialist

8 YEARS WITH HESS

10 YEARS INDUSTRY EXPERIENCE



Andrew Jones

Barge Supervisor

7 YEARS WITH HESS

15 YEARS INDUSTRY EXPERIENCE

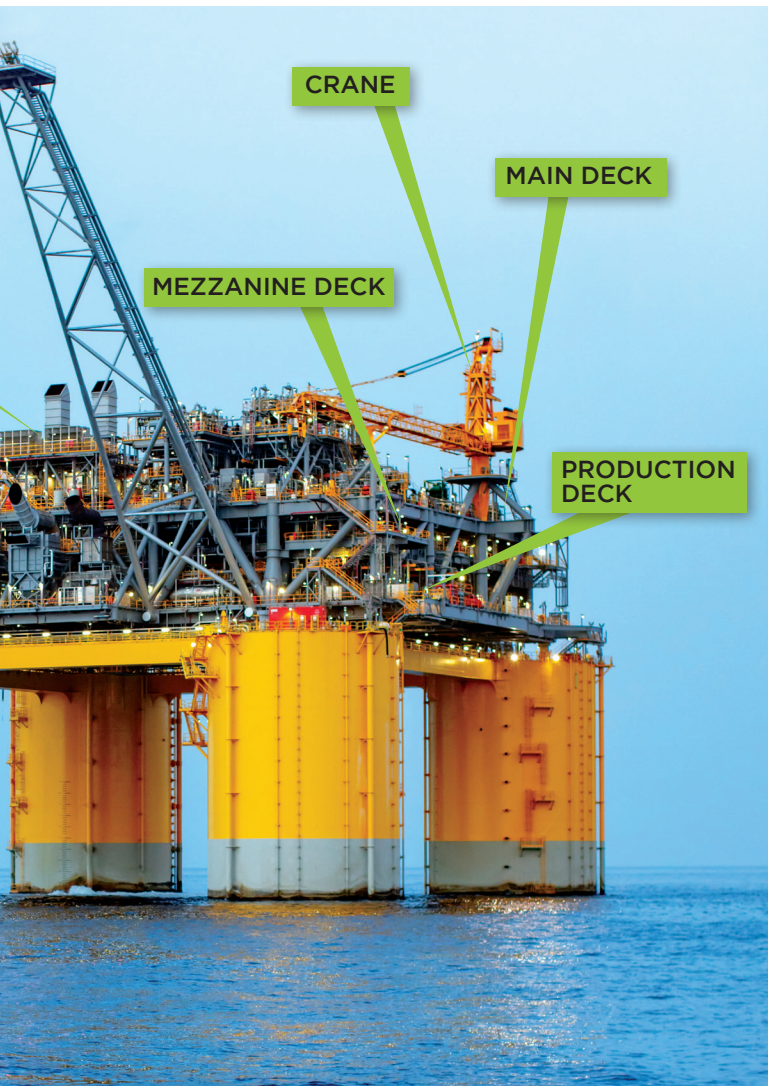


Brian Quiring

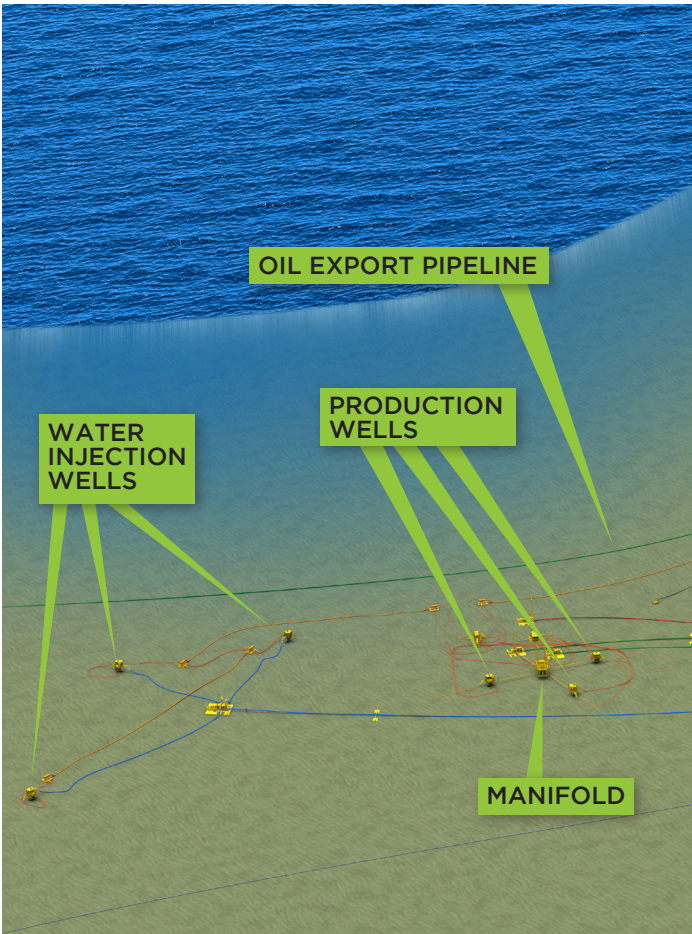
Offshore Installation Manager (OIM)

7 YEARS WITH HESS

35 YEARS INDUSTRY EXPERIENCE



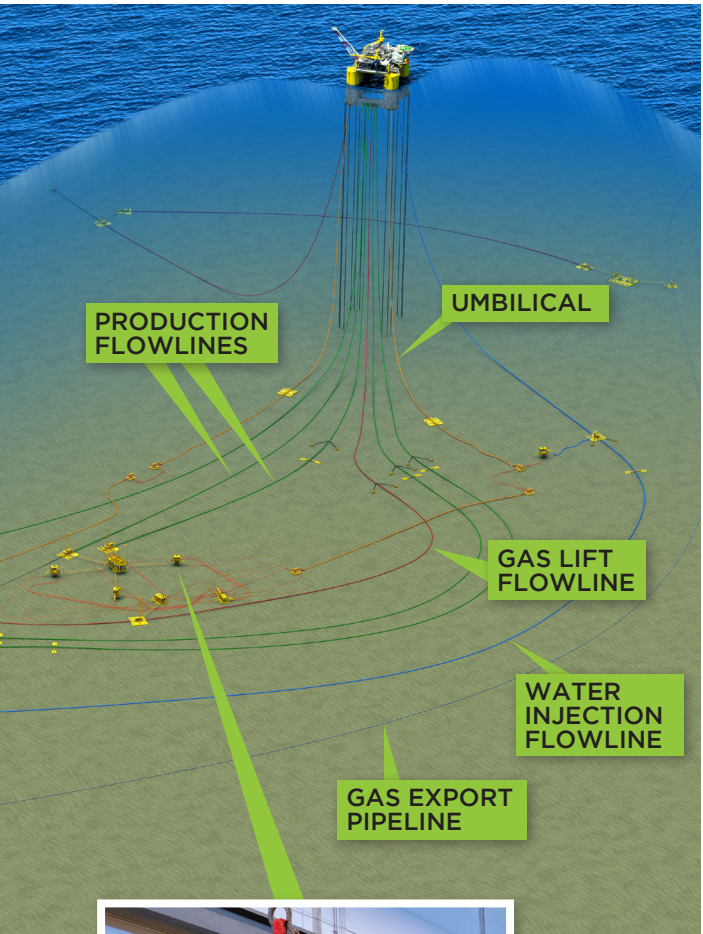
Subsea infrastructure



STAMPEDE SUBSURFACE SPECIFICATIONS

- ▶ 7 production wells and 4 water injection wells
- ▶ Single-point gas lift at 16,500 ft measured depth
- ▶ Capable of 13 MMSCFD of gas lift per well
- ▶ Down hole and top of hole chemical injection capability for all wells
- ▶ Electro-hydraulic control system providing electrical power and signals, hydraulic power, and chemical to the manifolds and trees via the umbilical system

schematic



*Stampede
subsea
production
well tree*