

# Itinerary

**MAY 27, 2022**

- 5:15AM** Depart hotel with all luggage
- 6:00AM** Arrive at Heliport. Change into PPE. Grab & Go Breakfast
- 6:30AM** Safety Briefing
- 7:00AM** Helicopter #1 departs to Stampede
- 7:30AM** Helicopter #2 departs to Stampede
- 9:15AM** Facility Safety Briefing
- 9:45AM** Facility Presentation and Review Tour Route
- 10:45AM** Photo opportunity on Helideck with Operations Team
- 11:00AM** Lunch with Stampede Team / Control Room Tour
- 12:00PM** Stampede Tour, including Main Deck and Production Deck
- 2:00PM** Closing Session
- 2:30PM** Helicopter #1 departs from Stampede
- 3:00PM** Helicopter #2 departs from Stampede
- 4:00PM** Helicopter #1 lands at Heliport
- 4:15PM** Vehicles depart for MSY Commercial Flights
- 4:30PM** Helicopter #2 lands at Heliport
- 4:45PM** Hess Charter departs for IAH
- 5:45PM** Charter arrives at IAH
- 6:00PM** Vehicle departures for all Charter passengers



Hess.com

MAY 27, 2022



# TRAVEL GUIDE

## GoM SITE VISIT

BOARD EHS COMMITTEE



### SAFETY

#### HELICOPTER

- ▶ Follow pilot's direction
- ▶ Approach helicopter from side to avoid rotors
- ▶ **Don't:** Approach helicopter from front or rear

#### GENERAL

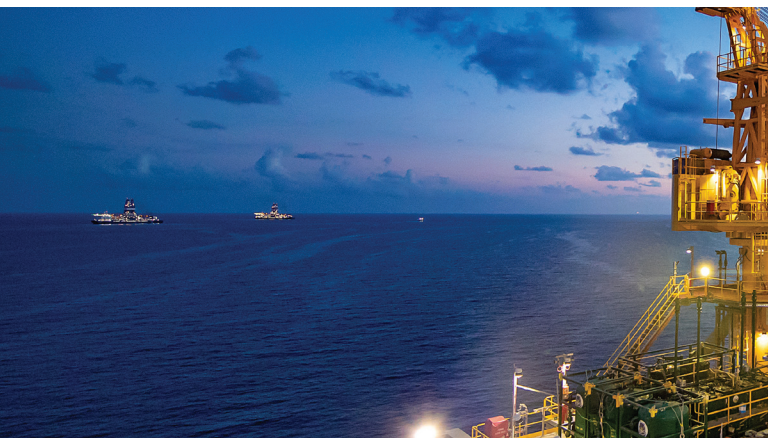
- ▶ If you see a hazard, point it out
- ▶ If you see anything unsafe, stop the job
- ▶ Know your muster station and lifeboat

EVERYONE  
EVERYWHERE  
EVERY DAY  
**HOME SAFE**

# Table of Contents

---

- 1** Itinerary
- 2** Safety Do's and Don'ts
- 3** Hess Rules
- 4** Helicopter Safety and Seating Positions
- 6** Hess Gulf of Mexico Overview
- 8** Flight Path
- 10** Stampede Facts
- 12** Stampede Team, and Facility Schematic
- 14** Subsea Infrastructure Schematic



# Itinerary

---

**MAY 27, 2022**

- 5:15AM** Depart hotel with all luggage
- 6:00AM** Arrive at Heliport. Change into PPE. Grab & Go Breakfast
- 6:30AM** Safety Briefing
- 7:00AM** Helicopter #1 departs to Stampede
- 7:30AM** Helicopter #2 departs to Stampede
- 9:15AM** Facility Safety Briefing
- 9:45AM** Facility Presentation and Review Tour Route
- 10:45AM** Photo opportunity on Helideck with Operations Team
- 11:00AM** Lunch with Stampede Team / Control Room Tour
- 12:00PM** Stampede Tour, including Main Deck and Production Deck
- 2:00PM** Closing Session
- 2:30PM** Helicopter #1 departs from Stampede
- 3:00PM** Helicopter #2 departs from Stampede
- 4:00PM** Helicopter #1 lands at Heliport
- 4:15PM** Vehicles depart for MSY Commercial Flights
- 4:30PM** Helicopter #2 lands at Heliport
- 4:45PM** Hess Charter departs for IAH
- 5:45PM** Charter arrives at IAH
- 6:00PM** Vehicle departures for all Charter passengers



# Safety Do's & Don'ts

## GENERAL

- ▶ If you see a hazard, point it out
- ▶ If you see anything unsafe, stop the job
- ▶ Report any incident/injury to facility leadership
- ▶ **Don't:** Let an unsafe act go unnoticed

## HELICOPTER

- ▶ Follow pilot's instructions
- ▶ Hearing protection must be worn at all times
- ▶ Place your phone in 'airplane mode' before boarding helicopter
- ▶ Approach helicopter from side
- ▶ **Don't: Approach helicopter from front or rear**
- ▶ **Don't: Wear loose items that could fly off near the helicopter**

## FACILITY

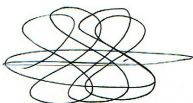
- ▶ Know your alarms and muster station
- ▶ **Don't: Take your phone outside of quarters**
- ▶ Be aware of hazards, e.g., overhead lifts
- ▶ Listen for safety announcements
- ▶ Always use handrails on stairs

EVERYONE  
EVERYWHERE  
EVERY DAY  
**HOME SAFE**



## STOP WORK AUTHORITY

I, the undersigned, hereby commit to support your Stop Work Authority, and will ensure that there are no repercussions to you for any stop work intervention that you initiate in good faith. Please contact me anytime that you need my assistance in this regard.



Gerbert Schoonman  
SVP, Production  
713.496.4678  
GSchoonman@hess.com

## HESS RULES



### Energy Isolation

Stored energy sources shall be identified, isolated, tested and communicated to appropriate personnel before work shall proceed.



### Lifting and Hoisting

Use only locally qualified operators and appropriate equipment for all mechanical lifting, hoisting and rigging operations.



### Working at Heights

Personal fall protection equipment must be worn when working 6 feet (1.8 meters) or higher above ground.



### Confined Space Entry

Confined spaces shall not be entered unless authorized by written permit.



### Hot Work

A written work permit is required for all hot work outside of designated safe areas.



### Excavation and Trenching

All excavation and trenching work greater than 4 feet (1.2 meters) deep requires written approval.



### Land Transportation

Identify all driving threats associated with motor vehicle activity prior to putting motor vehicle in motion.



### Safety System Bypass

Authorization shall be attained before bypassing safety systems.

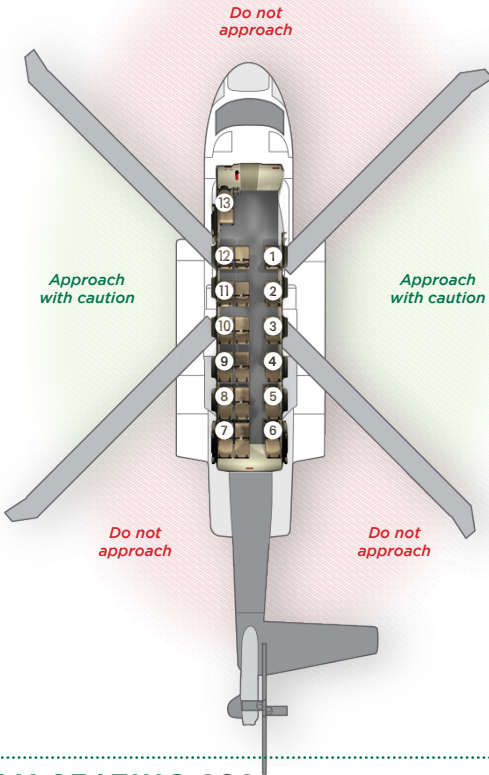


### Dropped Object Prevention

Appropriate precautions shall be taken in every task to identify, eliminate or control potential dropped objects.

# Helicopter Safety and

## AIRCRAFT 1: SIKORSKY S92



### TEAM SEATING S92



**Isaac Whitley**  
Hess  
**Seat position: 1**



**Jim Quigley**  
Board  
**Seat position: 9**



**Alex Sagebien**  
Hess  
**Seat position: 2**



**Ray McGuire**  
Board  
**Seat position: 10**



**Leonard Coleman**  
Board  
**Seat position: 3**



**Terry Checki**  
Board  
**Seat position: 11**



**Karyn Ovelmen**  
Board  
**Seat position: 4**



**Lisa Glatch**  
Board  
**Seat position: 12**



**Courtney Ruth**  
Hess  
**Seat position: 8**



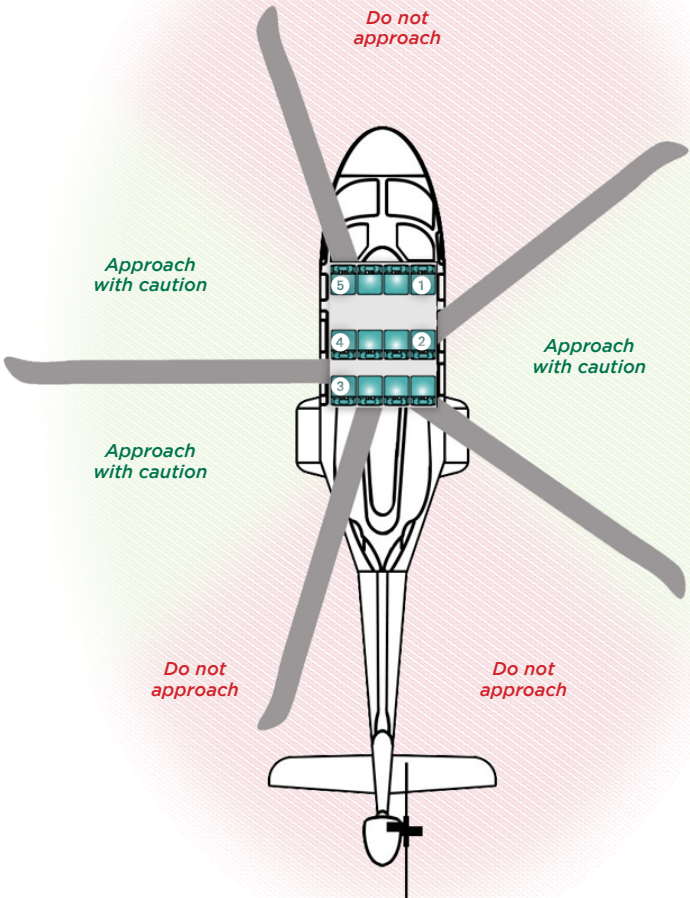
**Floyd Peterson**  
Hess  
**Seat position: 13**

The S92 is the most reliable heavy helicopter in industry with best-in-class safety record.

- ▶ Bristow has over 26,600 hours flown since introduction into the Gulf of Mexico
- ▶ Range: ~450 Miles
- ▶ Cruise speed: 147 knots (170 mph)

# Seating Positions

## AIRCRAFT 2: LEONARDO AW139



### TEAM SEATING AW139



**Steve Mendenhall**  
Hess  
**Seat position: 1**



**Bill Schrader**  
Board  
**Seat position: 4**



**Kevin Meyers**  
Board  
**Seat position: 2**



**Gerbert Schoonman**  
Hess  
**Seat position: 5**



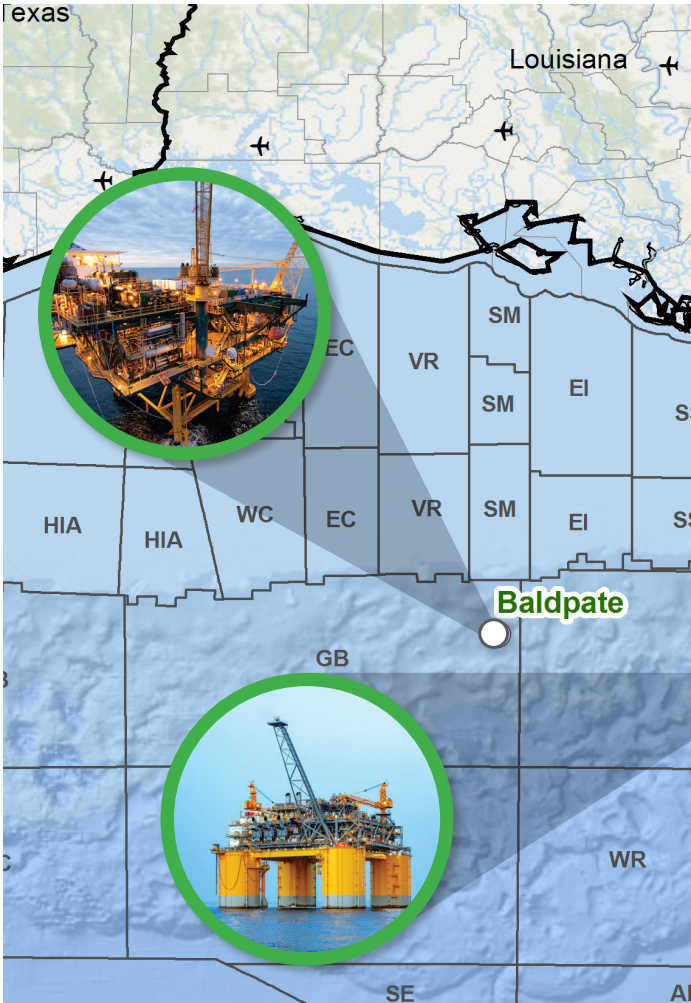
**David McManus**  
Board  
**Seat position: 3**

The Leonardo AW139 is equipped with the latest safety features and sets the standard for its class.

- ▶ Over 67,000 hours flown since 2015 transporting over 47,000 passengers annually.
- ▶ Range: ~450 Miles
- ▶ Cruise speed: 146 knots (168 mph)

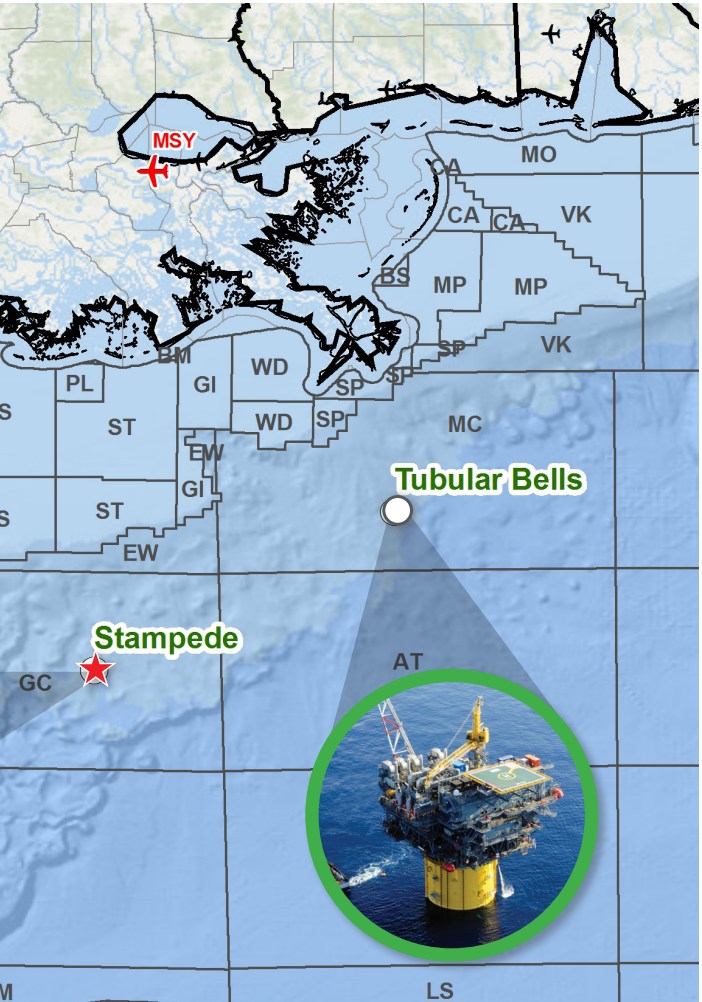


# Hess Gulf of Mexico



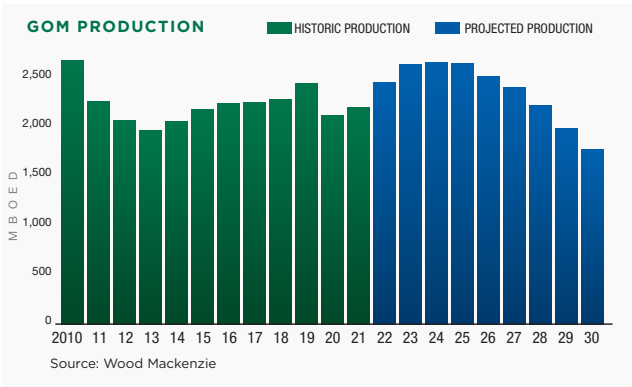
## HESS GULF OF MEXICO

- ▶ Hess has 7 fields in Gulf of Mexico
  - Operated: Stampede, Tubular Bells, Baldpate, Penn State, Conger, Essox
  - Non-Operated: Llano
- ▶ Hess is one of the largest operators in the Gulf of Mexico based on gross operated production
- ▶ More than 90 leasehold blocks in the Gulf of Mexico
- ▶ Greater than \$2.4 billion invested 2015-2021 USD



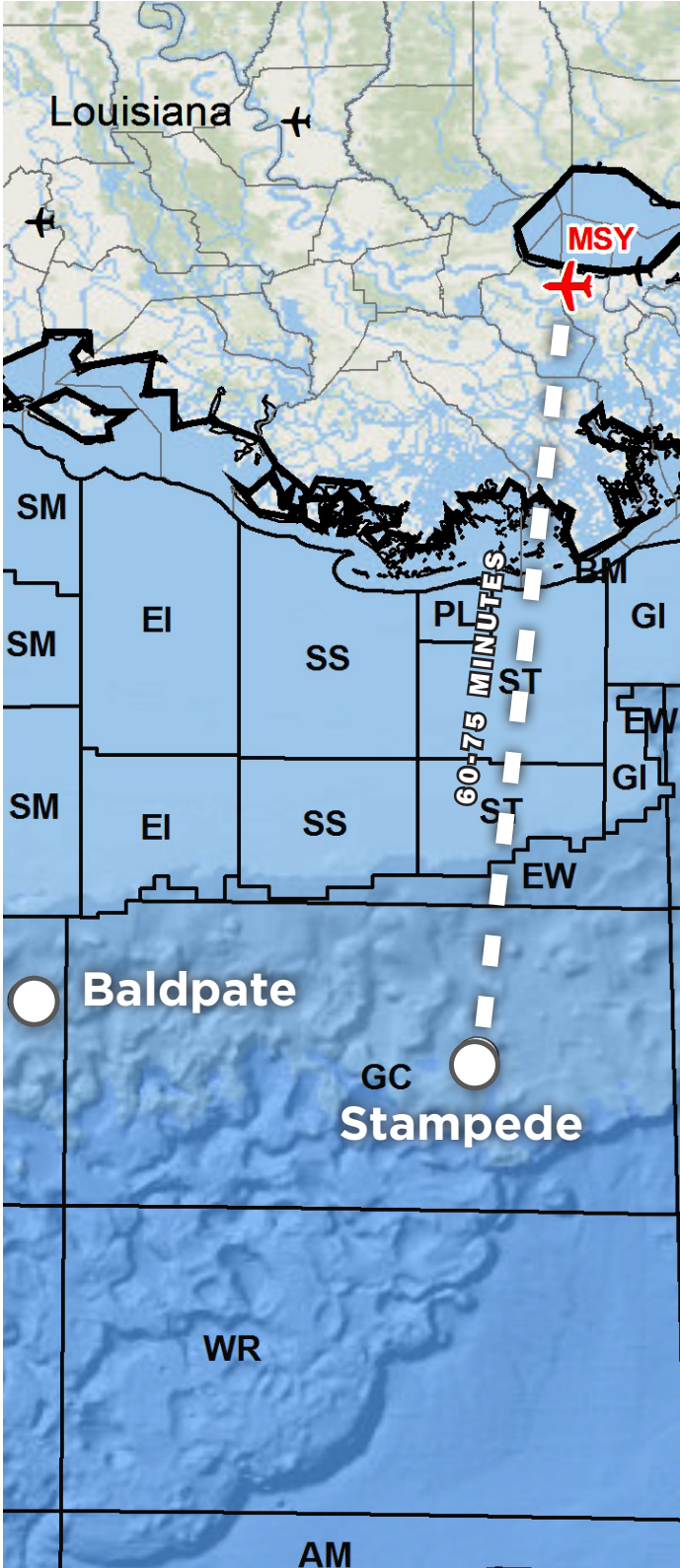
**GULF OF MEXICO PRODUCTION FACTS**

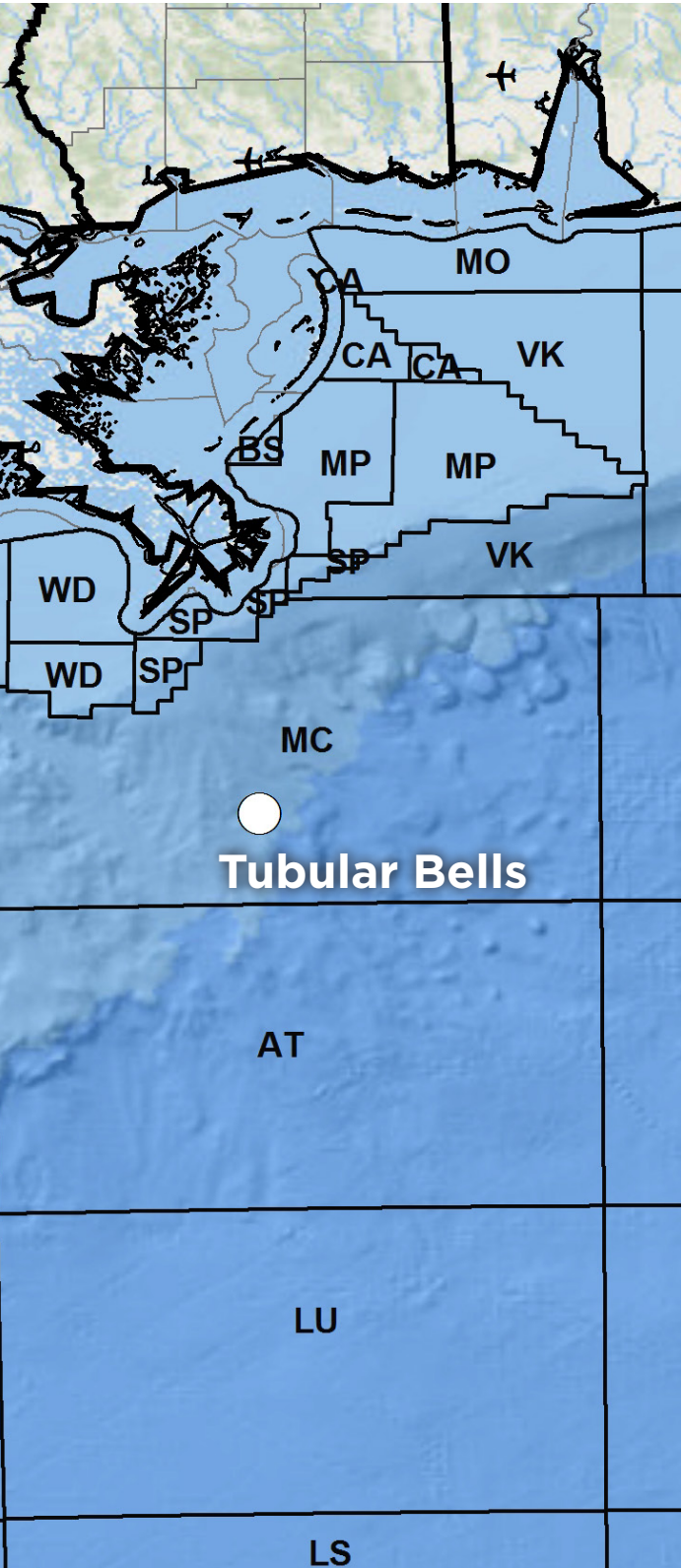
- ▶ Gulf of Mexico Deepwater production estimated at 2.4 MMBOED in 2022.



# Flight Path

## MSY TO STAMPEDE





# Stampede Facts



## ASSET DETAILS

<b>Working Interest</b>	Hess (operator): 25%; Chevron 25%, CNOOC 25%, Equinor 25%
<b>Discovery</b>	2005
<b>Project Sanction</b>	Oct 2014
<b>First Oil</b>	Jan 2018
<b>Water Depth</b>	3,600'
<b>Reservoir Depth</b>	32,000'
<b>2P Reserves</b>	173 MMBOE
<b>Production Wells</b>	7
<b>Injection Wells</b>	4





### TLP FACTS

<b>TLP Key Dimensions</b>	243 <sup>l</sup> L, 204 <sup>l</sup> W, 369 <sup>l</sup> H
<b>Weight of TLP</b>	74 million pounds
<b>Distance from Nearest Well</b>	1.5 miles
<b>Oil Processing Capacity</b>	80 MBOD
<b>Gas Processing Capacity</b>	40 MMCFD
<b>Water Injection Capacity</b>	100 MBWID
<b>Living Quarters Accommodations</b>	80

### TLP HIGHLIGHTS

- ▶ Winner of 2018 S&P Platts Global Energy Award for Construction Project of the Year
- ▶ 4,500 workers with over 14 million man-hours required to complete the facility

# Stampede Team and TEAM



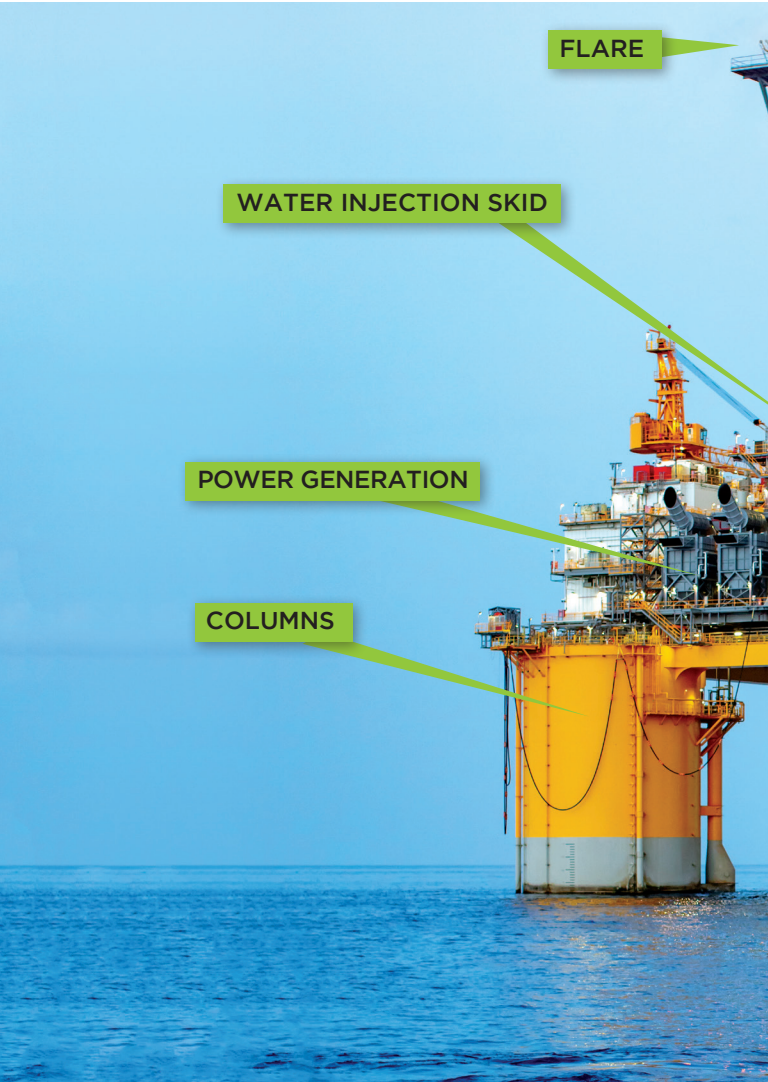
**Chad Melancon**  
*Senior Operations Lead*  
6 years with Hess;  
25 years industry experience



**Ben Pascalar**  
*Senior Process Surveillance Engineer*  
8 Years with Hess;  
12 years industry experience



**Tom Smith**  
*EHS Specialist*  
5 Years with Hess;  
15 Years industry experience



FLARE

WATER INJECTION SKID

POWER GENERATION

COLUMNS

# Facility Schematic



**Joe Ayers**

*Process Specialist*  
3 years with Hess;  
3 years industry experience



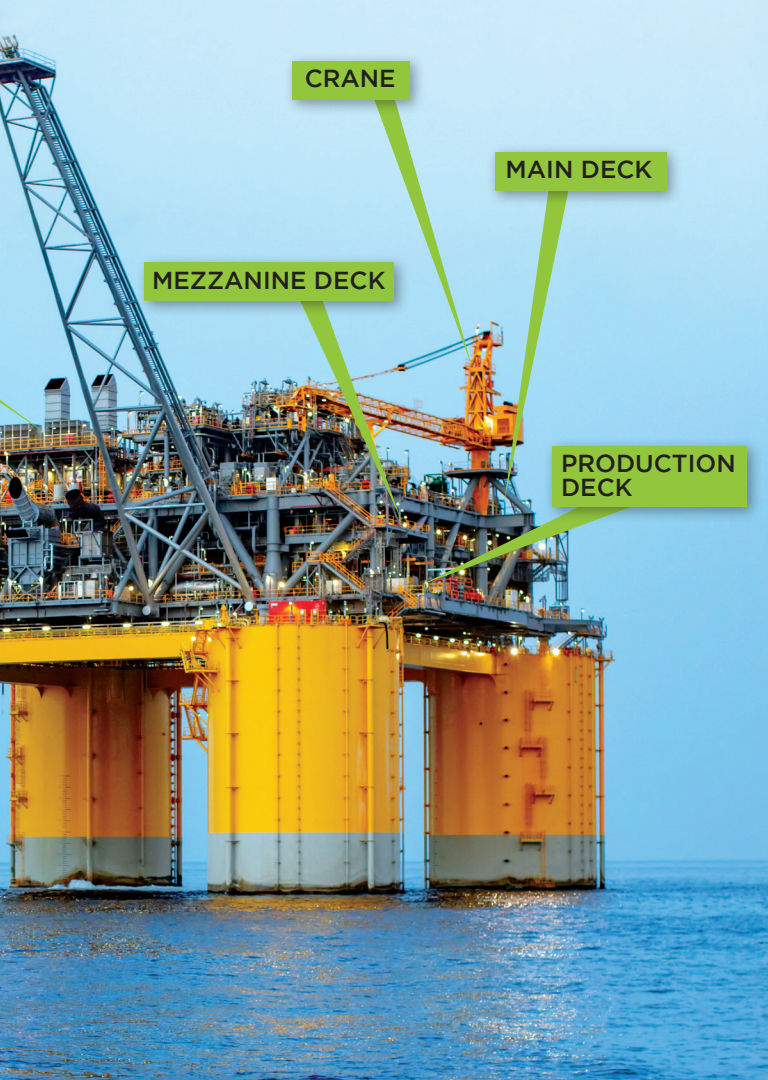
**Andrew Jones**

*Barge Supervisor*  
6 years with Hess;  
15 years industry experience



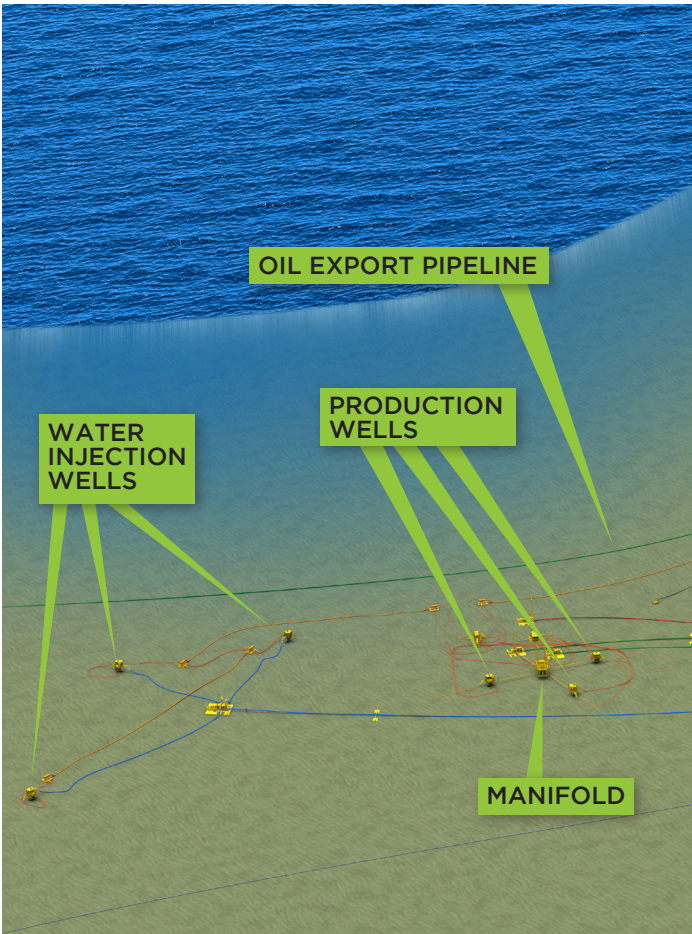
**Matthew LaVergne**

*Offshore Installation Manager*  
6 years with Hess;  
24 years industry experience





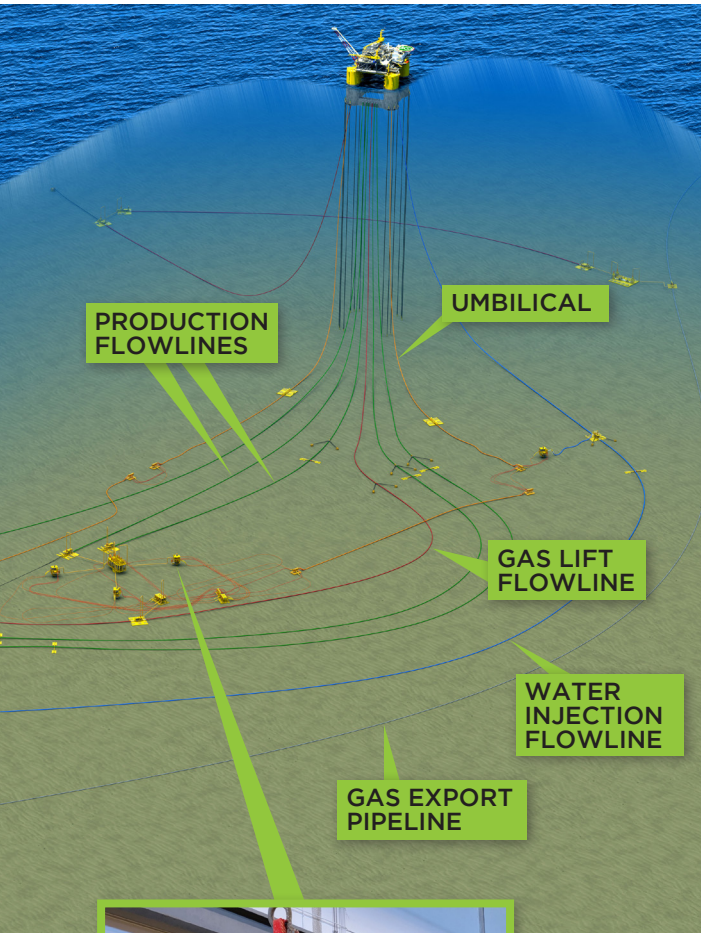
# Subsea Infrastructure



## STAMPEDE SUBSURFACE SPECIFICATIONS

- ▶ 7 production wells and 4 water injection wells
- ▶ Single-point gas lift at 16,500' measured depth
- ▶ Capable of 13MMSCFD of gas lift per well
- ▶ Down hole and top of hole chemical injection capability for all wells
- ▶ Electro-hydraulic control system providing electrical power and signals, hydraulic power, and chemical to the manifolds and trees via the umbilical system

# Schematic



*Stampede  
Subsea  
Production  
Well Tree*