

# Team #1 Itinerary

## JUNE 1

- 5:00PM** Pickup at Hess Tower, travel to Hobby (Hou); Ground Transport
- 5:45PM** Depart Hobby for New Orleans (MSY)
- 6:45PM** Travel to Windsor Court Hotel  
Dinner at Restaurant August upon arrival

## JUNE 2

- 6:30AM** Travel to New Orleans Airport; Ground Transport to Signature Flight Support
- 7:15AM** Passenger safety briefings; Jeff Goyer and Bristow video
- 7:45AM** Depart MSY to Baldpate (GB260); Depart from Signature Flight Support
- 9:00AM** Induction and presentation
- 10:00AM** Tour of facility
- 11:15AM** Lunch on Baldpate
- NOON** Depart for BlackLion (GC512)
- 12:35PM** Induction and presentation
- 1:35PM** Tour of facility
- 3:00PM** Depart for MSY
- 4:20PM** Depart for Houston (HOU); Some leaving direct from MSY



JUNE 2, 2016



# TRAVEL GUIDE

## GoM SITE VISIT

### EHS SUBCOMMITTEE

#### TEAM #1



## SAFETY

### HELICOPTER

- ▶ Follow pilot's direction
- ▶ Turn your phone off before boarding helicopter
- ▶ Approach helicopter from side to avoid rotors
- ▶ **Don't:** Approach helicopter from front or rear

### GENERAL

- ▶ If you see a hazard, point it out
- ▶ If you see anything unsafe, stop the job
- ▶ Know your muster station and life capsule
- ▶ Stay with your assigned group or "buddy"

EVERYONE  
EVERYWHERE  
EVERY DAY  
**HOME SAFE**

# Table of Contents

---

- 1** GoM Site Visit Itinerary
- 2** Safety Do's and Don'ts
- 3** Hess Rules
- 4** Helicopter Safety and Seating
- 6** Hess GoM Facts
- 8** Flight Paths
- 10** Baldpate Map & Facts
- 12** Baldpate Team, Tour Outline & Schematic
- 14** BlackLion Map & Facts
- 16** BlackLion Team, Tour Outline & Schematic
- 18** Stampede Facts

# Team #1 Itinerary

## JUNE 1

- 5:00PM** Pickup at Hess Tower, travel to Hobby (Hou); Ground Transport
- 5:45PM** Depart Hobby for New Orleans (MSY)
- 6:45PM** Travel to Windsor Court Hotel  
Dinner at Restaurant August upon arrival

## JUNE 2

- 6:30AM** Travel to New Orleans Airport; Ground Transport to Signature Flight Support
- 7:15AM** Passenger safety briefings; Jeff Goyer and Bristow video
- 7:45AM** Depart MSY to Baldpate (GB260); Depart from Signature Flight Support
- 9:00AM** Induction and presentation
- 10:00AM** Tour of facility
- 11:15AM** Lunch on Baldpate
- NOON** Depart for BlackLion (GC512)
- 12:35PM** Induction and presentation
- 1:35PM** Tour of facility
- 3:00PM** Depart for MSY
- 4:20PM** Depart for Houston (HOU); Some leaving direct from MSY

## TRAVEL GROUP

### HESS TEAM #1

Sam Brown	Fred Reynolds
Greg Hill	Alex Sagebien
David McManus	Bill Schrader
Kevin Meyers	Jeff Wirth

# Safety Do's & Don'ts

---

## GENERAL

- ▶ If you see a hazard, point it out
- ▶ If you see anything unsafe, stop the job
- ▶ Report any incident / injury to your assigned "buddy"
- ▶ Stay with your assigned "buddy"
- ▶ **Don't:** Let an unsafe act go unnoticed

## HELICOPTER

- ▶ Follow pilot's instructions
- ▶ Hearing protection must be worn at all times
- ▶ Wear closed toe shoes
- ▶ Turn your phone off before boarding helicopter
- ▶ Approach helicopter from side to avoid rotors
- ▶ **Don't: Approach helicopter from front or rear**
- ▶ **Don't: Wear loose items that could fly off near the helicopter**

## FACILITY

- ▶ Know your muster station and life capsule
- ▶ Know your alarms and safe areas
- ▶ Turn your phone off before going outside of quarters
- ▶ Be aware of hazards, e.g., overhead lifts
- ▶ Listen for safety announcements
- ▶ Always use handrails on stairs

EVERYONE  
EVERYWHERE  
EVERY DAY  
**HOME SAFE**

## HESS RULES



### Energy Isolation

Stored energy sources shall be identified, isolated, tested and communicated to appropriate personnel before work shall proceed



### Lifting and Hoisting

Use only locally qualified operators and appropriate equipment for all mechanical lifting, hoisting and rigging operations



### Working at Heights

Personal fall protection equipment must be worn when working 6 feet (1.8 meters) or higher above ground



### Confined Space Entry

Confined spaces shall not be entered unless authorized by written permit



### Hot Work

A written work permit is required for all hot work outside of designated safe areas



### Excavation and Trenching

All excavation and trenching work greater than 4 feet (1.2 meters) deep requires written approval



### Land Transportation

Identify all driving threats associated with motor vehicle activity prior to putting motor vehicle in motion

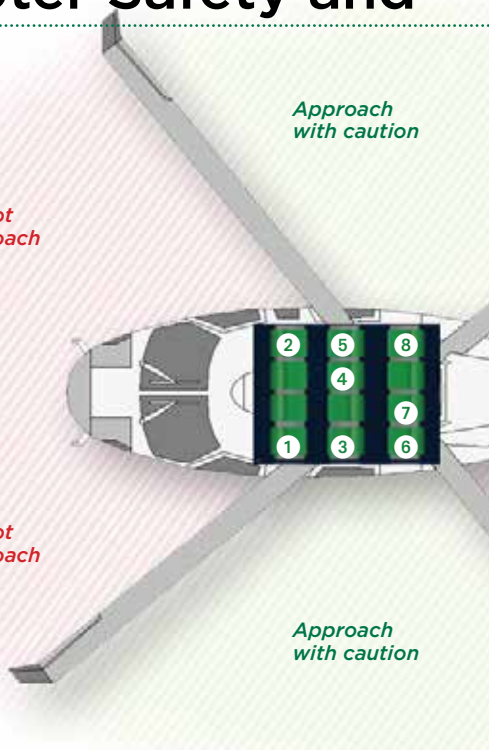
## STOP Work Authority

You have the authority and indeed the obligation to **STOP THE JOB** if you see an unsafe act or condition.

Stopping an operation for safety or environmental reasons will receive the full backing and support of Hess management.



# Helicopter Safety and



## HESS TEAM 1

### SEATING



**Bill Schrader**  
Former Chief Operating Officer, TNK-BP Russia

**Seat position: 1**



**Greg Hill**  
President  
7 years at Hess  
Fun Fact: My great grandfather was Franz Gruber - he wrote "Silent Night"

**Seat position: 5**



**Alex Sagebien**  
VP, EHS  
20 years at Hess  
Fun Fact Grew up in the Virgin Islands directly next to the Hess refinery

**Seat position: 2**



**Sam Brown**  
Director, OAWA D&C  
18 years at Hess  
Fun Fact: Love sports, soccer is my game and Manchester United is my team

**Seat position: 6**



**Jeff Wirth**  
Director, GoM Asset  
21 years at Hess  
Fun Fact Over the past 2 years, I've become a home automation junkie

**Seat position: 3**



**David McManus**  
Former Executive Vice President, Pioneer Natural Resources

**Seat position: 7**



**Fred Reynolds**  
Former Executive Vice President and Chief Financial Officer, CBS Corporation

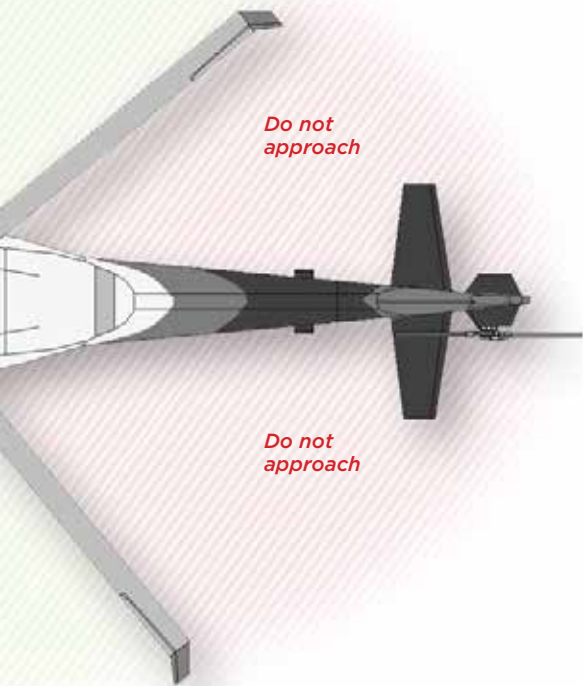
**Seat position: 4**



**Kevin Meyers**  
Former Senior Vice President of E&P for the Americas, ConocoPhillips

**Seat position: 8**

# Seating Positions



## AIRCRAFT

### SIKORSKY S76C SERIES



#### KEY FACTS

The S76C is one the most proven helicopter models in the offshore industry with ~5 million flight hours.

- ▶ Bristow has flown 135,000+ hours in the Sikorsky S76C aircraft in the GoM in last 10 yrs.
- ▶ Bristow recent averages ~12,000 flight hours/yr in the GoM
- ▶ Range (radius) is ~ 170 miles with a moderate payload of 1,700 lbs.
- ▶ On Time Performance: the S76C is a late generation, highly reliable aircraft; Hess enjoys an On Time Departure rate of 99.2%.

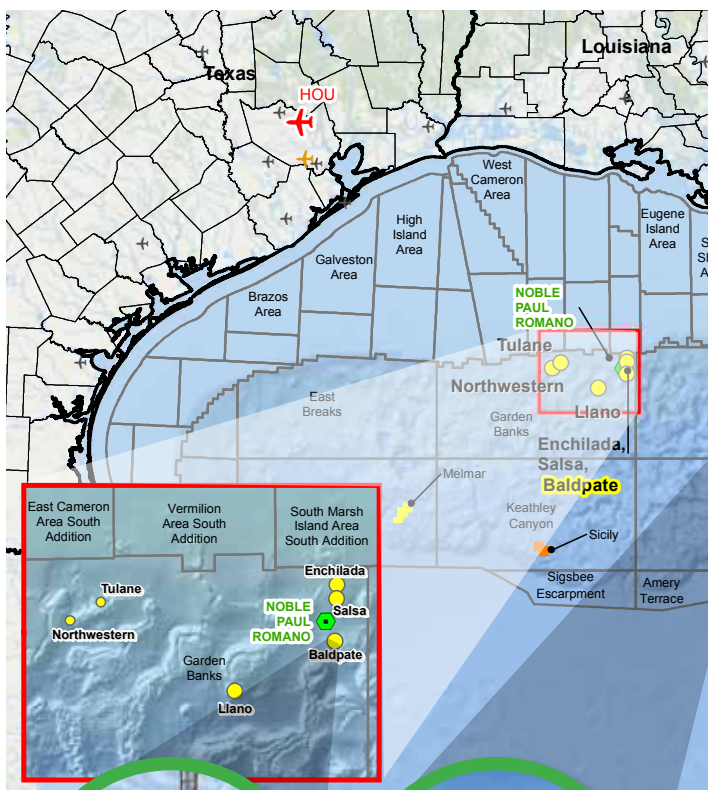
#### KEY TIMES FOR TEAM #1

See page one for full itinerary

- 7:45AM** Depart: MSY to Baldpate
- NOON** Depart: Baldpate to BlackLion
- 3:00PM** Depart: BlackLion to MSY
- 4:20PM** Depart: MSY to Houston



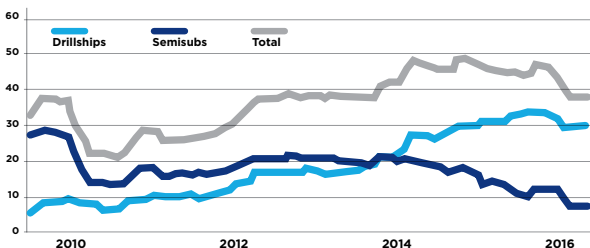
# Hess GoM

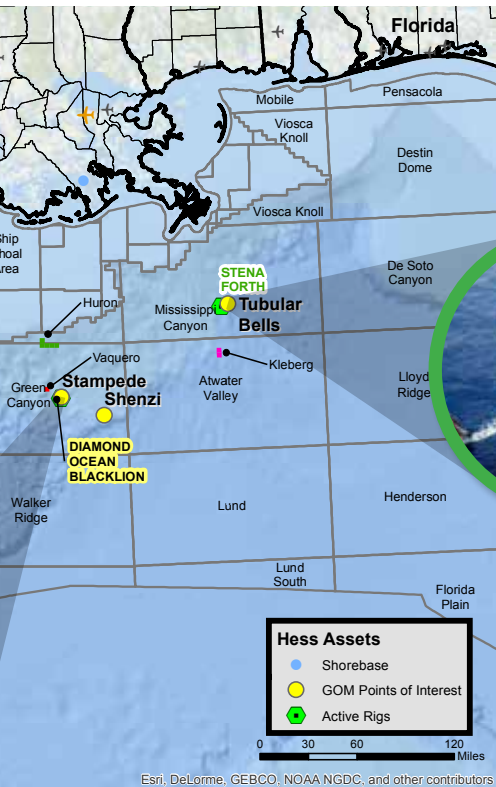


## GoM DRILLING FACTS

- ▶ Hess 4th most active in deepwater drilling.
- ▶ From the peak of 50 MODUs in December 2014, total count across the region had declined by almost 30% in February 2016 to 35 MODUs.
- ▶ Fifteen contracts have been executed on existing rigs in 2015 and 2016, with discounts ranging from 30% to more than 70% from the peak rate.

MONTHLY MODU COUNT, 2010-2016





### GoM PRODUCTION FACTS

- ▶ GoM deepwater production in 2015 averaged ~1,300,000 BOEPD.
- ▶ Hess has 11 fields in GoM
  - Operated: Tubular Bells, Stampede, Baldpate, Penn State, Conger, Northwestern, Tulane.
  - Non-Operated: Llano, Shenzi, Hack Wilson, Enchilada/Salsa/Elmer.
- ▶ 6th largest deepwater producer in 2015
  - 4th largest by 2019.
- ▶ Hess is the 17th largest acreage holder in GoM.

#### TOP GoM DEEPWATER PRODUCERS

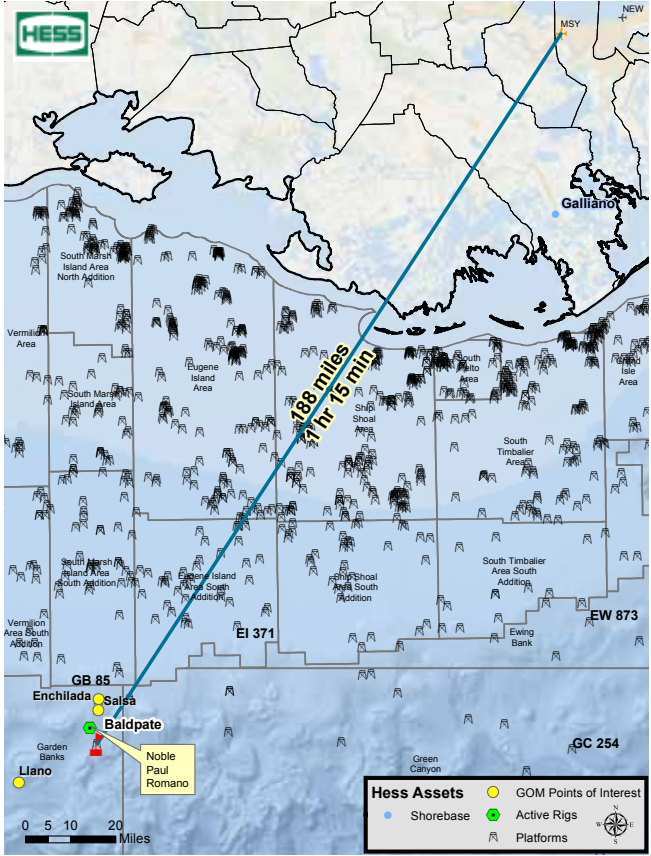
2015		
RANK	COMPANY	'000 BOE/D
1	BP	250
2	Shell	246
3	BHP Billiton	144
4	Chevron	98
5	Anadarko	85
6	<b>Hess</b>	<b>77</b>
7	Freeport-McMoRan	71
8	ExxonMobil	70
9	Eni	63
10	Petrobras	36

2019		
RANK	COMPANY	'000 BOE/D
1	BP	280
2	Shell	272
3	Chevron	209
4	<b>Hess</b>	<b>99</b>
5	ExxonMobil	94
6	Statoil	92
7	BHP Billiton	82
8	Anadarko	77
9	Freeport-McMoRan	63
10	Eni	37

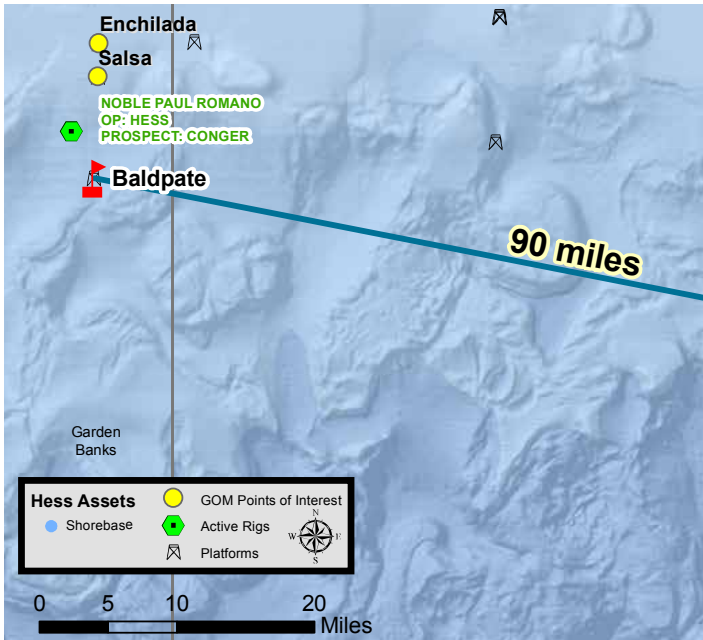
Source: Wood Mackenzie

# Flight Paths

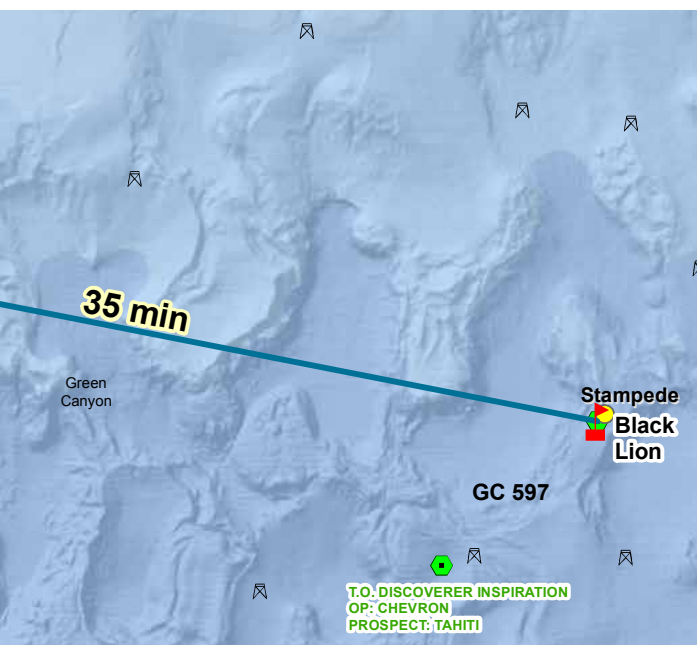
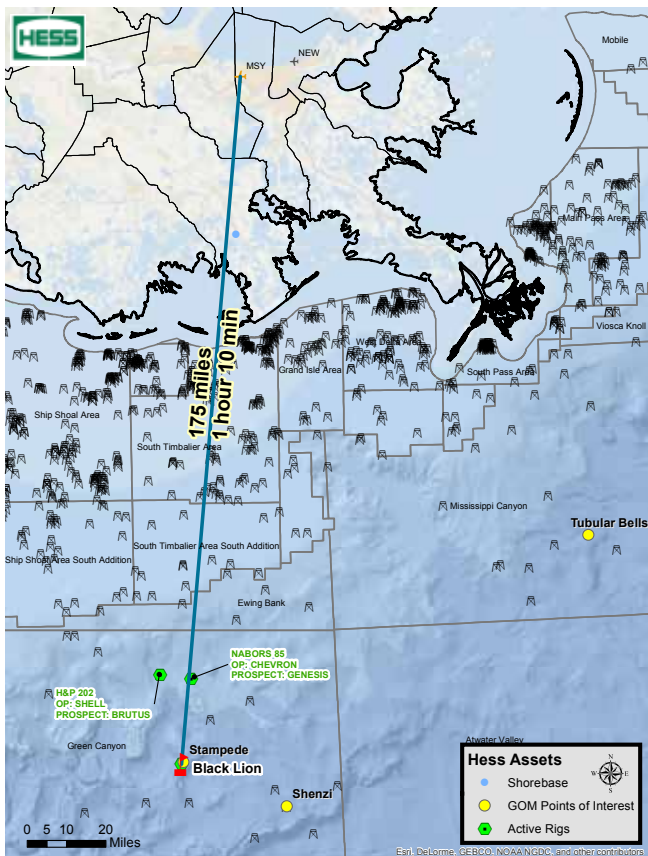
## MSY TO BALDPATE



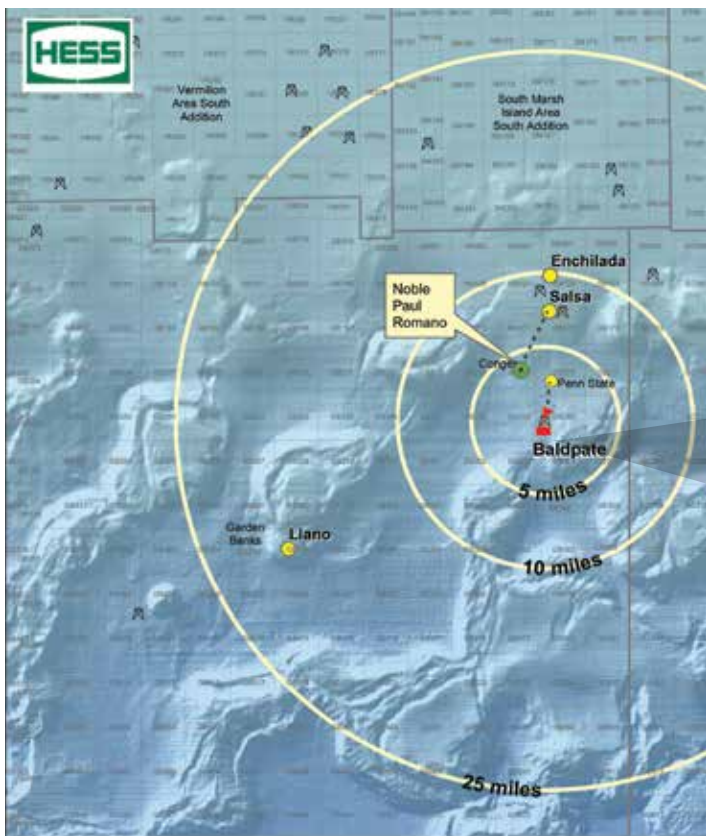
## BALDPATE TO BLACKLIION



# MSY TO BLACKLION



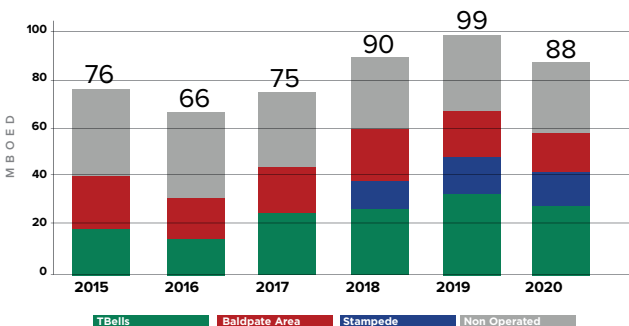
# Baldpate Area



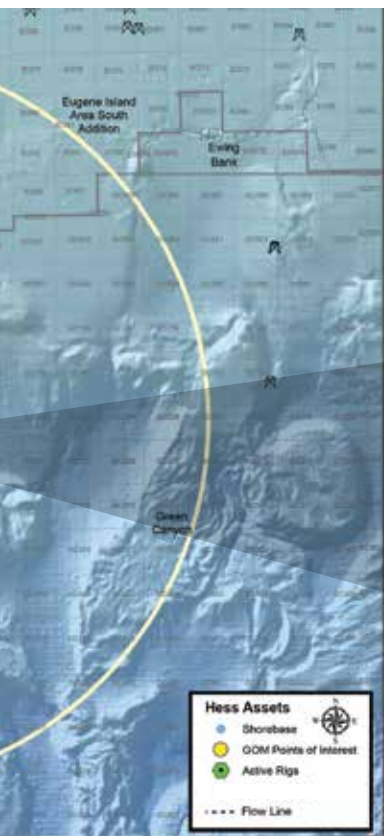
ASSET DTLS	BALDPATE/PENN CONGR	CONGR
Working Int.	Hess Op: 50%	Hess Op: 37.5%
Partners	Anad*: 50%	Shell: 37.5% Anad: 25%
Discovery	1991	1997
First Oil	1998	2000
Water Dep.	~1,650 <sup>l</sup>	~1,560 <sup>l</sup>
Ult. (est)	~200 MMBOE	~300 MMBOE

\*Anad. = Anadarko

## BALDPATE: PRODUCTION



Baldpate area includes Baldpate, Conger, Penn State



## ASSET HIGHLIGHTS

- ▶ First Offshore Compliant Tower
  - 1,900' from flare tip to seafloor. The tallest free-standing structure in the world at that time
- ▶ Baldpate Area production to date  
~370 MMBOE (gross)
- ▶ Multiple near field tie-back opportunities
- ▶ Noble Paul Romano drilling Conger 10 development well
- ▶ Won two consecutive Peak Awards (Nov., Dec. 2015) recognizing Operational Excellence, including improved safety, reliability and cost
- ▶ Baldpate/Penn State was one of the first to utilize subsea CT scanning technology to measure pipeline wall thickness

# Baldpate

## TEAM

### MIKE KING

Offshore Installation Manager (OIM)

### DOUG KEMP

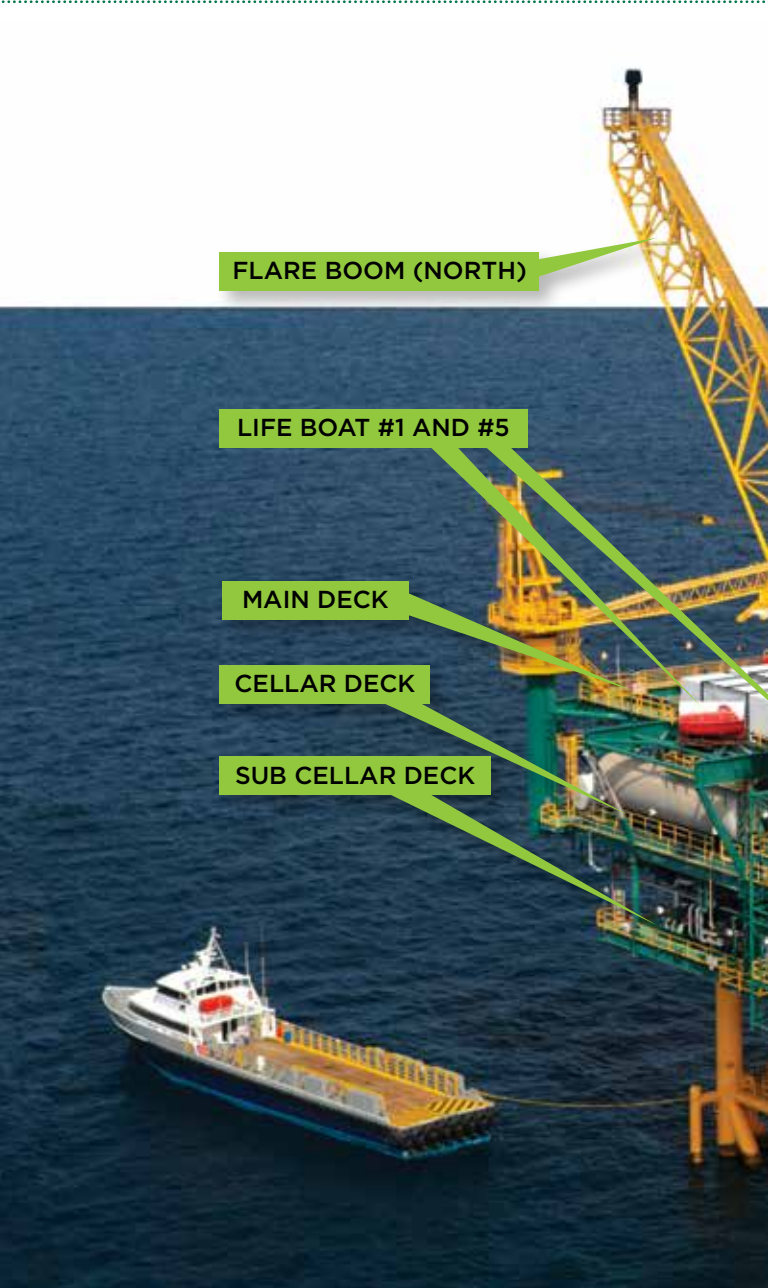
OAWA Integrity Advisor

### ROSS MELANCON

Senior Facilities Engineer

### SCOTT NUNEZ

Production Supervisor



FLARE BOOM (NORTH)

LIFE BOAT #1 AND #5

MAIN DECK

CELLAR DECK

SUB CELLAR DECK

---

## TOUR OUTLINE

- 1 Helideck
- 2 Safety Briefing Room
- 3 Muster Point
- 4 Control Room
- 5 Workshop
- 6 Treater
- 7 Separator

HELIDECK (SOUTH)

LIFE BOAT #2

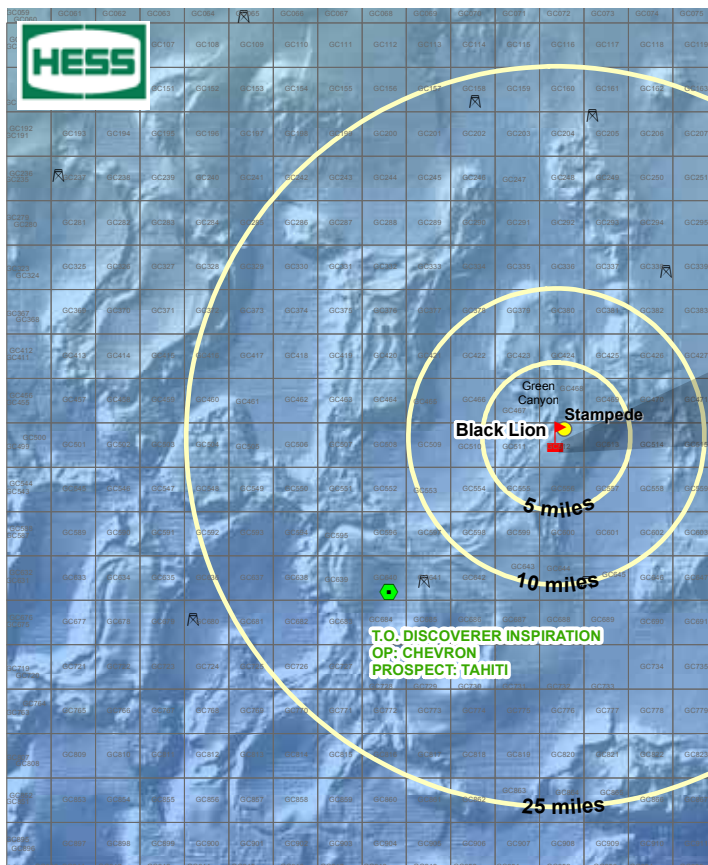
BOAT LANDING

LIFE RAFTS



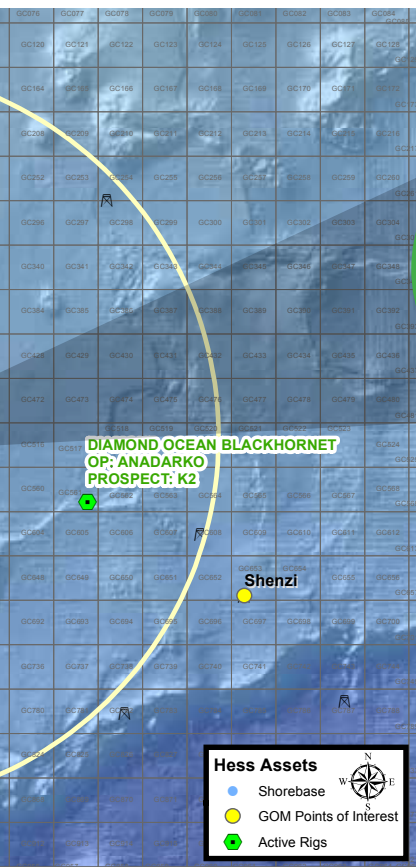


# BlackLion



## DRILLSHIP SPECIFICATIONS

<b>Year Entered Service</b>	2015
<b>Dimensions</b>	757' long x 118' wide x 60' deep Derrick: 210' high
<b>Transit Speed</b>	up to 12 knots
<b>Water Depth</b>	12,000' designed / 10,000' outfitted
<b>Drilling Depth</b>	40,000'
<b>Storage Capacities</b>	Liquid Mud: 15,204 bbls Base Oil: 7,209 bbls Brine: 13,175 bbls Drill Water: 18,593 bbls Potable Water: 8,834 bbls
<b>Subsea Equipment</b>	BOP Stacks (2): Hydril 18 3/4" 15,000 psi seven-ram preventer



**POWER EQUIPMENT**

**Main Power**

6 x Himsen diesel engines rated 4,500kW, each driving 5,375 kVA AC generators

2 x Himsen V-type diesel engines rated 9,000kW, each driving 5,375 kVA AC generators

**Emergency Power**

V-type Cummins diesel engine rated 1,900Kw driving 1 x STX engine rated 1,550kW AC generator

**STATION KEEPING/PROPULSION**

**Thrusters**

6 x Thrustmaster, 5,000kW azimuth thrusters w fixed pitch variable speed propeller

**DP System**

Kongsberg K-POS

**OTHER INFORMATION**

**Accommodations** 210 people

# BlackLion

## TEAM

**SAMMY NEEL**

Senior Supervisor, Drilling

**KEVIN LAMBERT**

Manager, Drilling & Completions

**DAVID ZAUNBRECHER**

Drilling Superintendent

**JOSEPH ELFERT**

Diamond Offshore Installation Manager (OIM)



## TOUR OUTLINE

- 1 Helideck
- 2 Safety Briefing Room
- 3 Bridge
- 4 Drill Floor
- 5 Drill Control
- 6 BOP
- 7 ROV

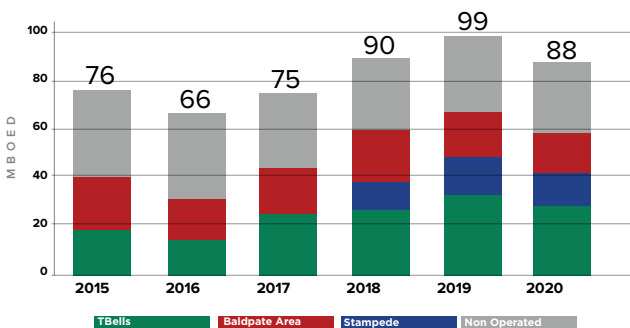


# Stampede

## ASSET DETAILS

<b>Working Interest</b>	Hess Operator: 25%
<b>Partners</b>	Chevron, Statoil, Nexen, all 25%
<b>Discovery</b>	2005
<b>First Oil</b>	2018
<b>Water Depth</b>	3,500'
<b>Ultimate Recovery (est)</b>	300-350 MMBOE

### STAMPEDE: FUTURE PRODUCTION



Baldpate area includes Baldpate, Conger, Penn State



## ASSET HIGHLIGHTS

- ▶ \$6 billion development (gross)
- ▶ Sanctioned 2014
- ▶ 6 producers, 4 injectors from 2 well centers that tie back to the TLP
- ▶ Topsides weight of 15,848 short tons
- ▶ A two-rig drilling program, second rig BlackRhino beginning in 2017
- ▶ Reservoir depth 30,000'
- ▶ One of the deepest developments in the Gulf of Mexico

