

Team #2 Itinerary

JUNE 1

- 5:00PM** Pickup at Hess Tower, travel to Hobby (Hou); Ground Transport
- 5:45PM** Depart Hobby for New Orleans (MSY)
- 6:45PM** Travel to Windsor Court Hotel
Dinner at Restaurant August upon arrival

JUNE 2

- 6:30AM** Travel to New Orleans Airport; Ground Transport to Signature Flight Support
- 7:15AM** Passenger safety briefings; Jeff Goyer and Bristow video
- 7:45AM** Depart MSY to BlackLion (GC512); Depart from Signature Flight Support
- 8:55AM** Induction and presentation
- 10:00AM** Tour of facility
- 11:15AM** Lunch on BlackLion
- NOON** Depart for Baldpate (GB260)
- 12:35PM** Induction and presentation
- 1:35PM** Tour of facility
- 3:00PM** Depart for MSY
- 4:20PM** Depart for Houston (HOU); Some leaving direct from MSY



JUNE 2, 2016



TRAVEL GUIDE

GoM SITE VISIT

EHS SUBCOMMITTEE

TEAM #2



SAFETY

HELICOPTER

- ▶ Follow pilot's direction
- ▶ Turn your phone off before boarding helicopter
- ▶ Approach helicopter from side to avoid rotors
- ▶ **Don't:** Approach helicopter from front or rear

GENERAL

- ▶ If you see a hazard, point it out
- ▶ If you see anything unsafe, stop the job
- ▶ Know your muster station and life capsule
- ▶ Stay with your assigned group or "buddy"

EVERYONE
EVERYWHERE
EVERY DAY
HOME SAFE

Table of Contents

- 1** GoM Site Visit Itinerary
- 2** Safety Do's and Don'ts
- 3** Hess Rules
- 4** Helicopter Safety and Seating
- 6** Hess GoM Facts
- 8** Flight Paths
- 10** BlackLion Map & Facts
- 12** BlackLion Team, Tour Outline & Schematic
- 14** Stampede Facts
- 16** Baldpate Map & Facts
- 18** Baldpate Team, Tour Outline & Schematic

Team #2 Itinerary

JUNE 1

- 5:00PM** Pickup at Hess Tower, travel to Hobby (Hou); Ground Transport
- 5:45PM** Depart Hobby for New Orleans (MSY)
- 6:45PM** Travel to Windsor Court Hotel
- Dinner at Restaurant August upon arrival

JUNE 2

- 6:30AM** Travel to New Orleans Airport; Ground Transport to Signature Flight Support
- 7:15AM** Passenger safety briefings; Jeff Goyer and Bristow video
- 7:45AM** Depart MSY to BlackLion (GC512); Depart from Signature Flight Support
- 8:55AM** Induction and presentation
- 10:00AM** Tour of facility
- 11:15AM** Lunch on BlackLion
- NOON** Depart for Baldpate (GB260)
- 12:35PM** Induction and presentation
- 1:35PM** Tour of facility
- 3:00PM** Depart for MSY
- 4:20PM** Depart for Houston (HOU); Some leaving direct from MSY

TRAVEL GROUP

HESS TEAM #2

Rodney Chase	Kevin Lambert
Blane Cole	Jim Quigley
Rob Fast	Andy Slentz
Ede Holiday	Brian Truelove

Safety Do's & Don'ts

GENERAL

- ▶ If you see a hazard, point it out
- ▶ If you see anything unsafe, stop the job
- ▶ Report any incident / injury to your assigned "buddy"
- ▶ Stay with your assigned "buddy"
- ▶ **Don't:** Let an unsafe act go unnoticed

HELICOPTER

- ▶ Follow pilot's instructions
- ▶ Hearing protection must be worn at all times
- ▶ Wear closed toe shoes
- ▶ Turn your phone off before boarding helicopter
- ▶ Approach helicopter from side to avoid rotors
- ▶ **Don't: Approach helicopter from front or rear**
- ▶ **Don't: Wear loose items that could fly off near the helicopter**

FACILITY

- ▶ Know your muster station and life capsule
- ▶ Know your alarms and safe areas
- ▶ Turn your phone off before going outside of quarters
- ▶ Be aware of hazards, e.g., overhead lifts
- ▶ Listen for safety announcements
- ▶ Always use handrails on stairs

EVERYONE
EVERYWHERE
EVERY DAY
HOME SAFE

HESS RULES



Energy Isolation

Stored energy sources shall be identified, isolated, tested and communicated to appropriate personnel before work shall proceed



Lifting and Hoisting

Use only locally qualified operators and appropriate equipment for all mechanical lifting, hoisting and rigging operations



Working at Heights

Personal fall protection equipment must be worn when working 6 feet (1.8 meters) or higher above ground



Confined Space Entry

Confined spaces shall not be entered unless authorized by written permit



Hot Work

A written work permit is required for all hot work outside of designated safe areas



Excavation and Trenching

All excavation and trenching work greater than 4 feet (1.2 meters) deep requires written approval



Land Transportation

Identify all driving threats associated with motor vehicle activity prior to putting motor vehicle in motion

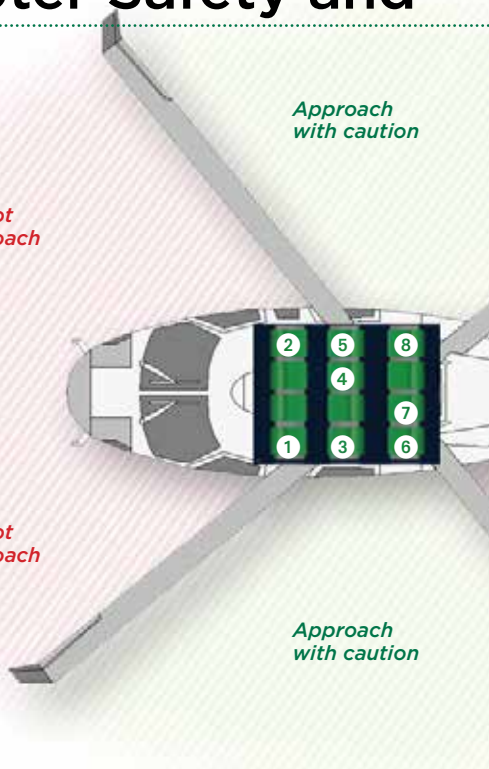
STOP Work Authority

You have the authority and indeed the obligation to **STOP THE JOB** if you see an unsafe act or condition.

Stopping an operation for safety or environmental reasons will receive the full backing and support of Hess management.



Helicopter Safety and



HESS TEAM 2

SEATING



Rodney Chase
Former Deputy Group
Chief Executive, BP

Seat position: 1



Kevin Lambert
Manager
Drilling & Completions

8 years at Hess

Fun Fact: Completed my first marathon (Houston) in 2016

Seat position: 2



Blane Cole
Senior Manager GSC
OAWA

9 years at Hess

Fun Fact: Played baseball in college

Seat position: 8



Jim Quigley
Chairman of the Board
Former Chief Executive
Officer, Deloitte Touche
Tohmatsu Limited

Seat position: 6



Rob Fast
Vice President Offshore
Americas & Africa

7 years at Hess

Fun Fact: 4th generation in oil & gas industry

Seat position: 5



Andy Slentz
Senior Vice President,
Human Resources

8 weeks at Hess

Fun Fact: My High school swim team still holds a NY state record

Seat position: 4



Ede Holiday
Former Assistant to
the U.S. President
and Secretary of
the Cabinet; former
General Counsel, U.S.
Department of the
Treasury

Seat position: 7

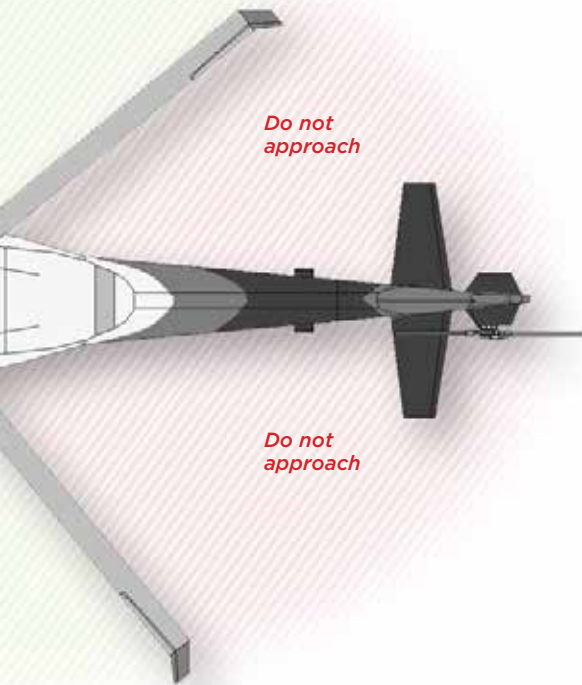


Brian Truelove
Senior Vice President
- Offshore Asia
Pacific

5 years at Hess

Seat position: 3

Seating Positions



AIRCRAFT

SIKORSKY S76C SERIES



KEY FACTS

The S76C is one the most proven helicopter models in the offshore industry with ~5 million flight hours.

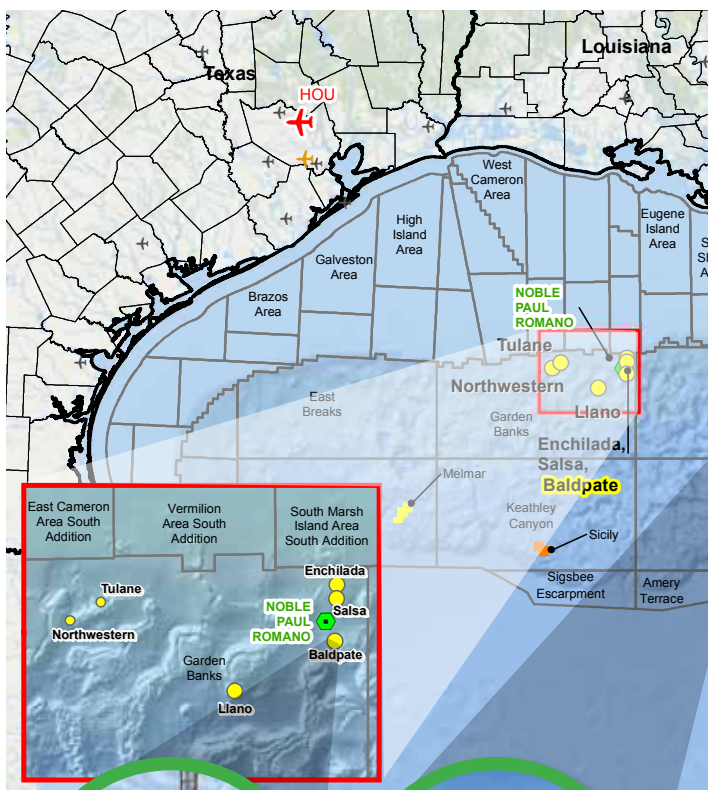
- ▶ Bristow has flown 135,000+ hours in the Sikorsky S76C aircraft in the GoM in last 10 yrs.
- ▶ Bristow recent averages ~12,000 flight hours/yr in the GoM
- ▶ Range (radius) is ~ 170 miles with a moderate payload of 1,700 lbs.
- ▶ On Time Performance: the S76C is a late generation, highly reliable aircraft; Hess enjoys an On Time Departure rate of 99.2%.

KEY TIMES FOR TEAM #2

See page one for full itinerary

- 7:45AM** Depart: MSY to BlackLion
- NOON** Depart: BlackLion to Baldpate
- 3:00PM** Depart: Baldpate to MSY
- 4:20PM** Depart: MSY to Houston

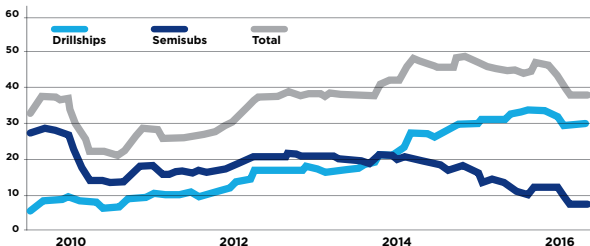
Hess GoM

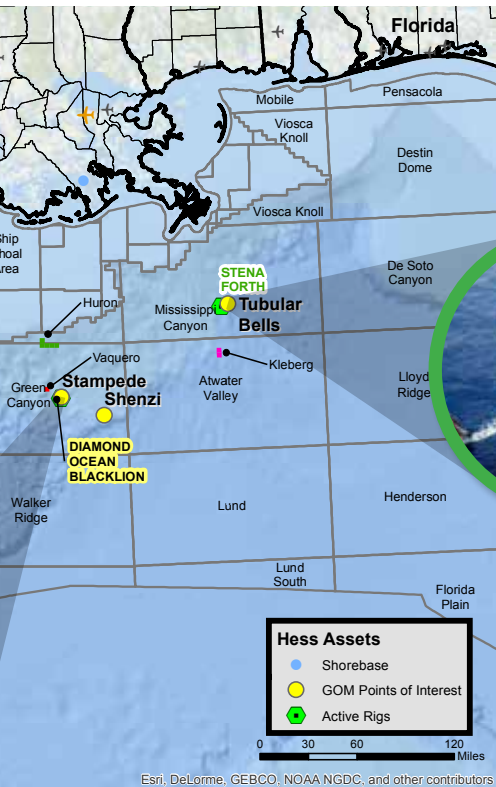


GoM DRILLING FACTS

- ▶ Hess 4th most active in deepwater drilling.
- ▶ From the peak of 50 MODUs in December 2014, total count across the region had declined by almost 30% in February 2016 to 35 MODUs.
- ▶ Fifteen contracts have been executed on existing rigs in 2015 and 2016, with discounts ranging from 30% to more than 70% from the peak rate.

MONTHLY MODU COUNT, 2010-2016





GoM PRODUCTION FACTS

- ▶ GoM deepwater production in 2015 averaged ~1,300,000 BOEPD.
- ▶ Hess has 11 fields in GoM
 - Operated: Tubular Bells, Stampede, Baldpate, Penn State, Conger, Northwestern, Tulane.
 - Non-Operated: Llano, Shenzi, Hack Wilson, Enchilada/Salsa/Elmer.
- ▶ 6th largest deepwater producer in 2015 - 4th largest by 2019.
- ▶ Hess is the 17th largest acreage holder in GoM.

TOP GoM DEEPWATER PRODUCERS

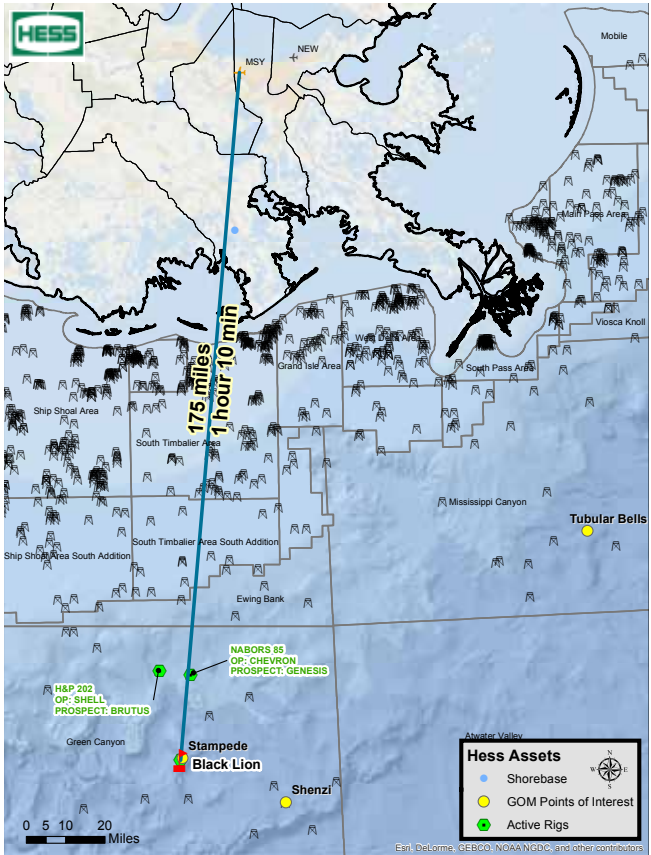
2015		
RANK	COMPANY	'000 BOE/D
1	BP	250
2	Shell	246
3	BHP Billiton	144
4	Chevron	98
5	Anadarko	85
6	Hess	77
7	Freeport-McMoRan	71
8	ExxonMobil	70
9	Eni	63
10	Petrobras	36

2019		
RANK	COMPANY	'000 BOE/D
1	BP	280
2	Shell	272
3	Chevron	209
4	Hess	99
5	ExxonMobil	94
6	Statoil	92
7	BHP Billiton	82
8	Anadarko	77
9	Freeport-McMoRan	63
10	Eni	37

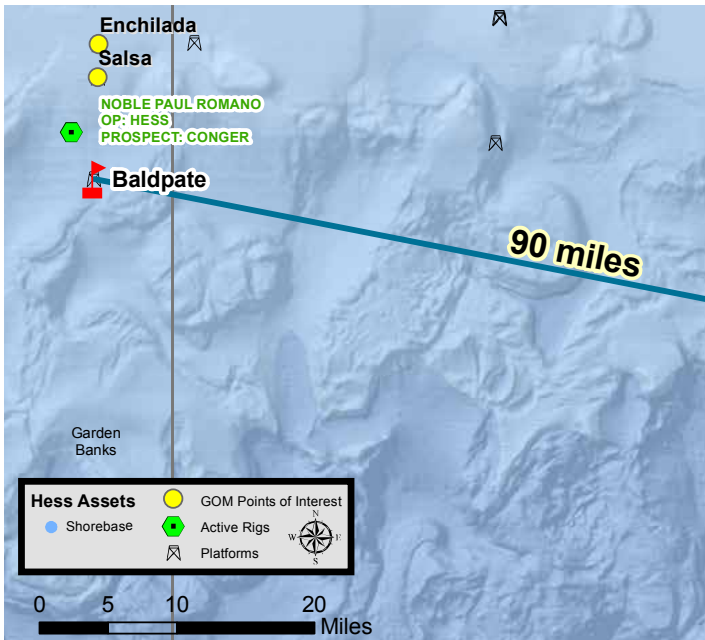
Source: Wood Mackenzie

Flight Paths

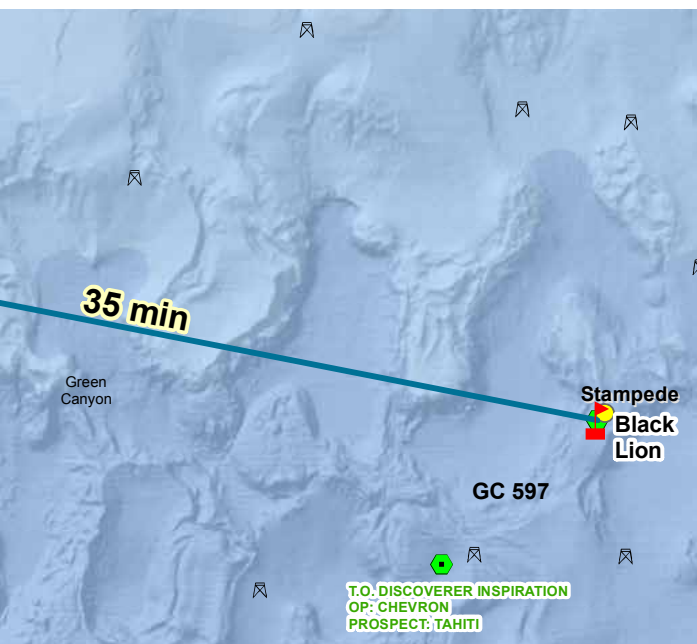
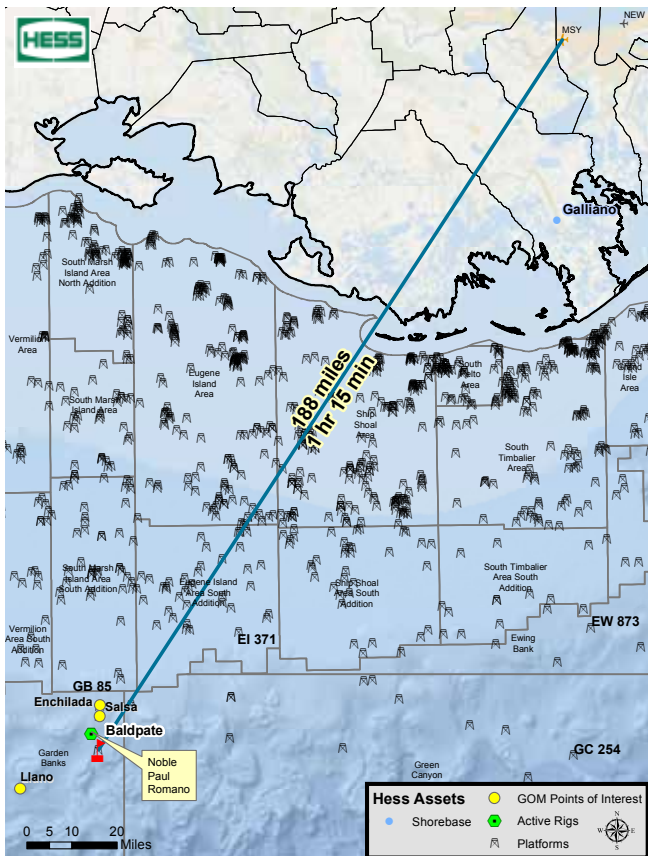
MSY TO BLACKLION



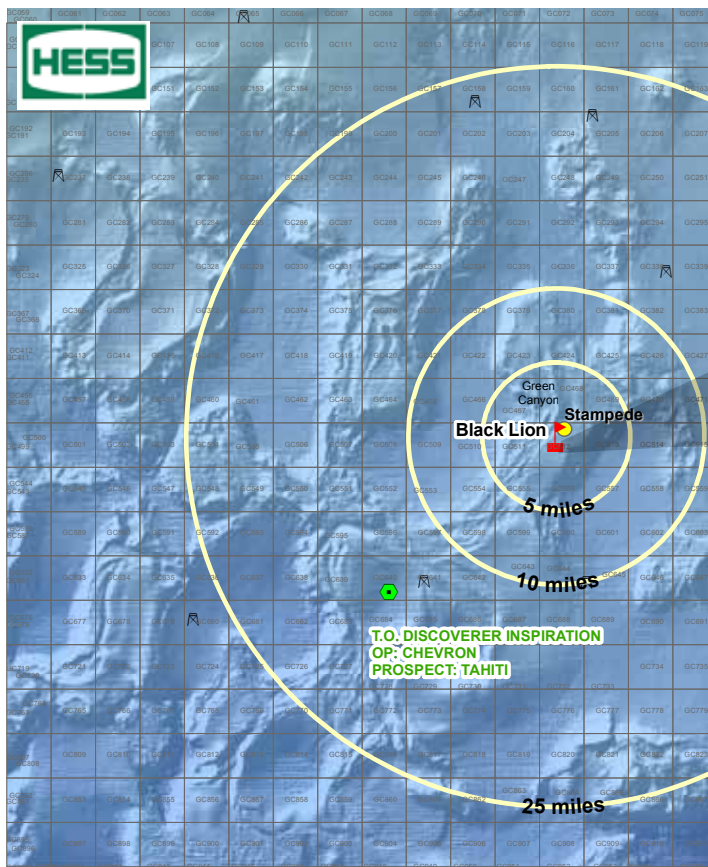
BLACKLION TO BALDPATE



MSY TO BALDPATE

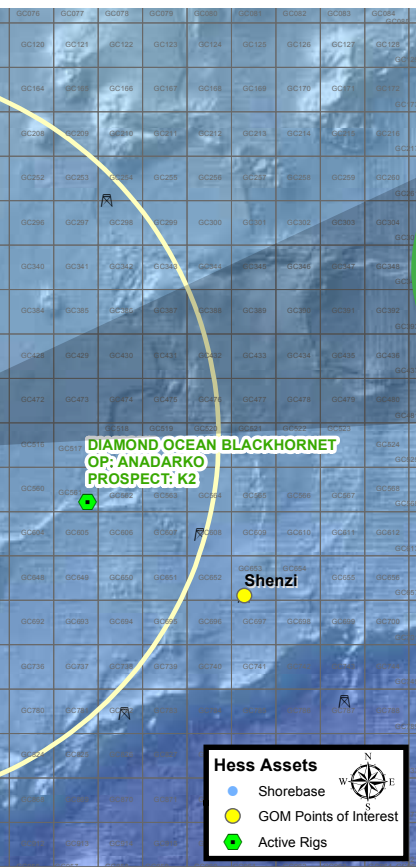


BlackLion



DRILLSHIP SPECIFICATIONS

Year Entered Service	2015
Dimensions	757' long x 118' wide x 60' deep Derrick: 210' high
Transit Speed	up to 12 knots
Water Depth	12,000' designed / 10,000' outfitted
Drilling Depth	40,000'
Storage Capacities	Liquid Mud: 15,204 bbls Base Oil: 7,209 bbls Brine: 13,175 bbls Drill Water: 18,593 bbls Potable Water: 8,834 bbls
Subsea Equipment	BOP Stacks (2): Hydril 18 3/4" 15,000 psi seven-ram preventer



POWER EQUIPMENT

Main Power

6 x Himsen diesel engines rated 4,500kW, each driving 5,375 kVA AC generators

2 x Himsen V-type diesel engines rated 9,000kW, each driving 5,375 kVA AC generators

Emergency Power

V-type Cummins diesel engine rated 1,900Kw driving 1 x STX engine rated 1,550kW AC generator

STATION KEEPING/PROPULSION

Thrusters

6 x Thrustmaster, 5,000kW azimuth thrusters w fixed pitch variable speed propeller

DP System

Kongsberg K-POS

OTHER INFORMATION

Accommodations 210 people

BlackLion

TEAM

SAMMY NEEL

Senior Supervisor, Drilling

KEVIN LAMBERT

Manager, Drilling & Completions

DAVID ZAUNBRECHER

Drilling Superintendent

JOSEPH ELFERT

Diamond Offshore Installation Manager (OIM)



DRILL PIPE (RACKED)

DUAL DERRICK

AFT DECK

BOP

TOUR OUTLINE

- 1 Helideck
- 2 Safety Briefing Room
- 3 Bridge
- 4 Drill Floor
- 5 Drill Control
- 6 BOP
- 7 ROV



LIVING QUARTERS/OFFICES

HELIDECK

FORWARD DECK

LIFE CAPSULES

BRIDGE

OCEAN BLACKLION

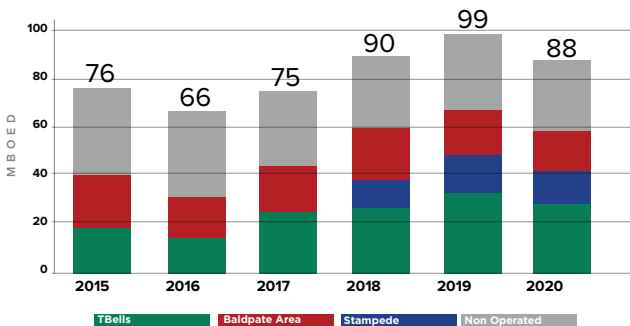
HESS

Stampede

ASSET DETAILS

Working Interest	Hess Operator: 25%
Partners	Chevron, Statoil, Nexen, all 25%
Discovery	2005
First Oil	2018
Water Depth	3,500'
Ultimate Recovery (est)	300-350 MMBOE

STAMPEDE: FUTURE PRODUCTION

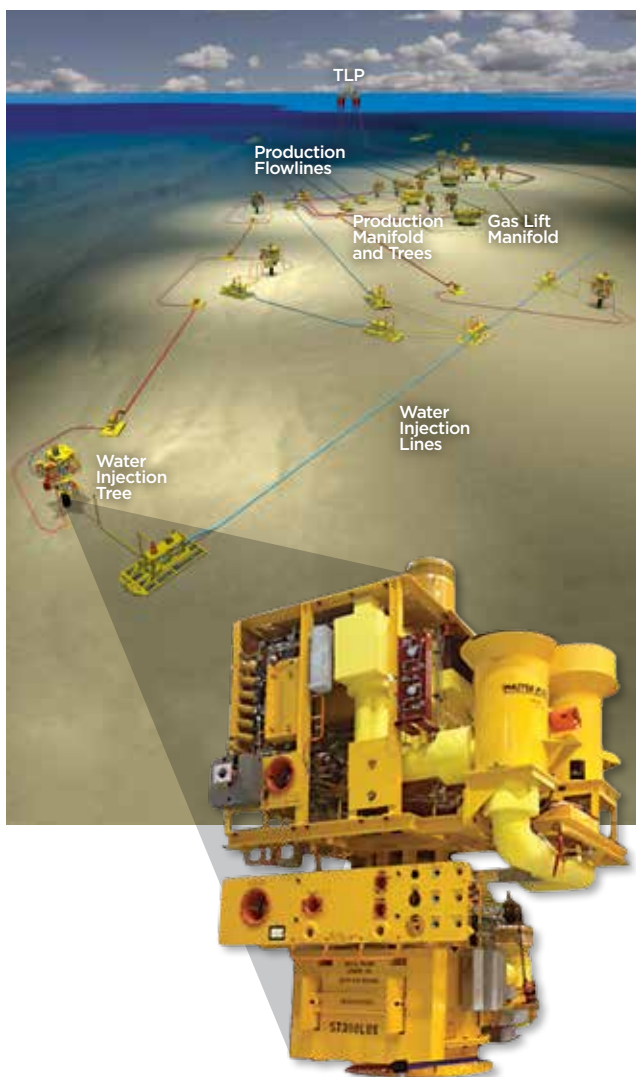


Baldpate area includes Baldpate, Conger, Penn State

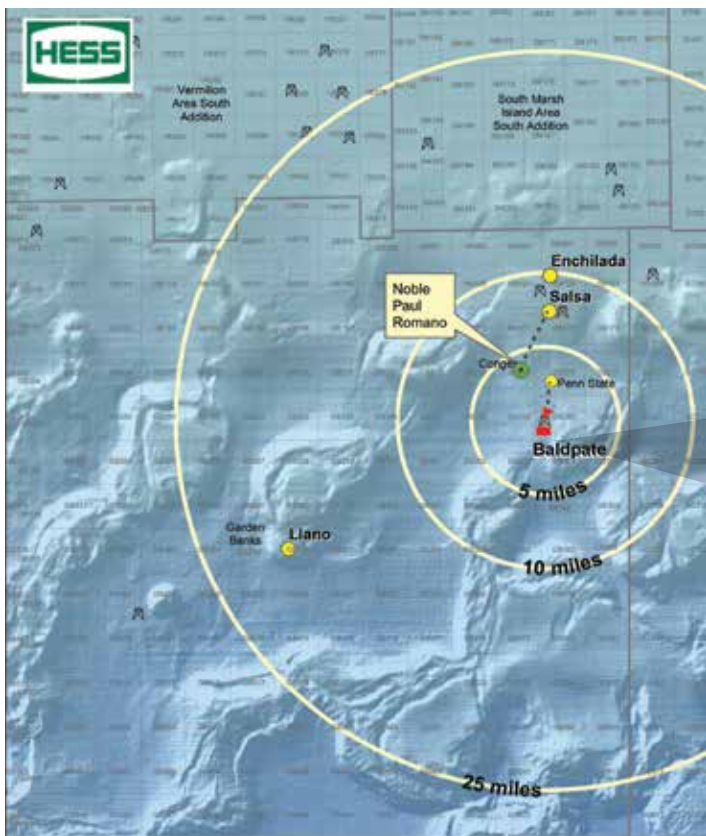


ASSET HIGHLIGHTS

- ▶ \$6 billion development (gross)
- ▶ Sanctioned 2014
- ▶ 6 producers, 4 injectors from 2 well centers that tie back to the TLP
- ▶ Topsides weight of 15,848 short tons
- ▶ A two-rig drilling program, second rig BlackRhino beginning in 2017
- ▶ Reservoir depth 30,000'
- ▶ One of the deepest developments in the Gulf of Mexico



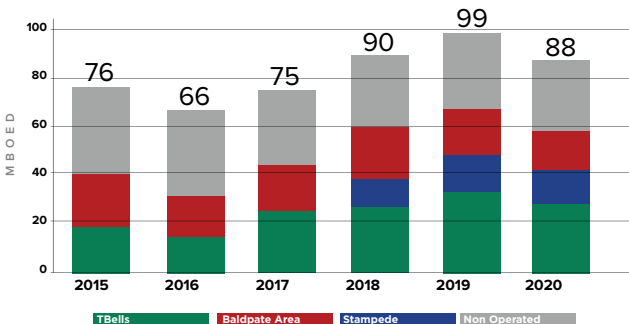
Baldpate Area



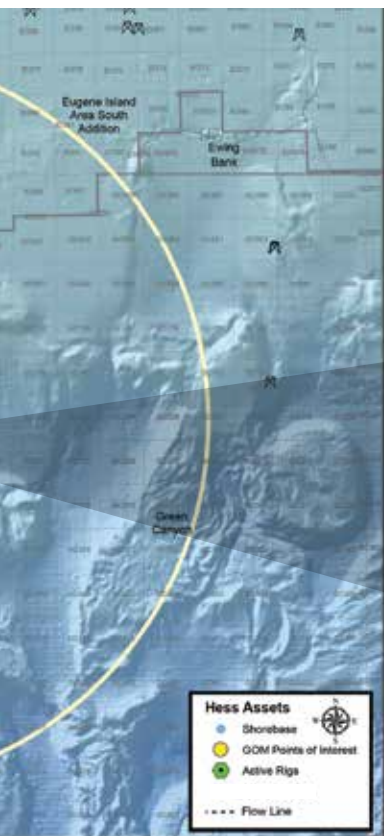
ASSET DTLS	BALDPATE/PENN	CONGER
Working Int.	Hess Op: 50%	Hess Op: 37.5%
Partners	Anad*: 50%	Shell: 37.5% Anad: 25%
Discovery	1991	1997
First Oil	1998	2000
Water Dep.	~1,650 ^l	~1,560 ^l
Ult. (est)	~200 MMBOE	~300 MMBOE

*Anad. = Anadarko

BALDPATE: PRODUCTION



Baldpate area includes Baldpate, Conger, Penn State



ASSET HIGHLIGHTS

- ▶ First Offshore Compliant Tower
 - 1,900' from flare tip to seafloor. The tallest free-standing structure in the world at that time
- ▶ Baldpate Area production to date ~370 MMBOE (gross)
- ▶ Multiple near field tie-back opportunities
- ▶ Noble Paul Romano drilling Conger 10 development well
- ▶ Won two consecutive Peak Awards (Nov., Dec. 2015) recognizing Operational Excellence, including improved safety, reliability and cost
- ▶ Baldpate/Penn State was one of the first to utilize subsea CT scanning technology to measure pipeline wall thickness

Baldpate

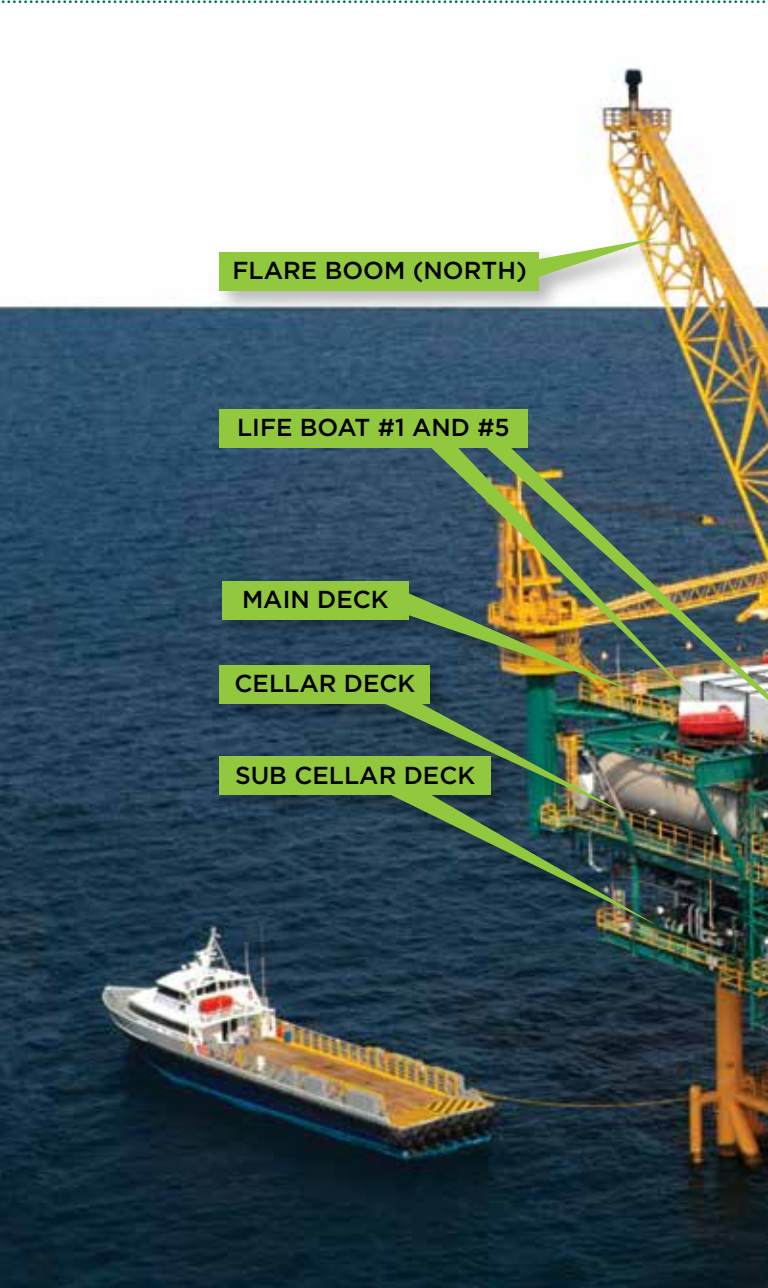
TEAM

MIKE KING
Offshore Installation Manager (OIM)

DOUG KEMP
OAWA Integrity Advisor

ROSS MELANCON
Senior Facilities Engineer

SCOTT NUNEZ
Production Supervisor



FLARE BOOM (NORTH)

LIFE BOAT #1 AND #5

MAIN DECK

CELLAR DECK

SUB CELLAR DECK

TOUR OUTLINE

- 1 Helideck
- 2 Safety Briefing Room
- 3 Muster Point
- 4 Control Room
- 5 Workshop
- 6 Treater
- 7 Separator

HELIDECK (SOUTH)

LIFE BOAT #2

BOAT LANDING

LIFE RAFTS

