

HESS INC. TRUCK No. 1 RESTORATION

THESE INDIVIDUALS CONTRIBUTED TO THE SUCCESS OF THIS PROJECT

<u>NAME</u>	<u>COMPANY</u>	<u>CONTRIBUTION</u>
ROCCO COLABELLA	AMERADA HESS	PROPOSED RESTORATION, SOUGHT MANAGEMENT APPROVAL
MARTIN MARANO	AMERADA HESS	SUPPORTED PROJECT, PROVIDED ADVICE AND GUIDANCE
DON GAY	HOVIC	OVERSAW EXECUTION AT HOVIC
STEVE STRAHAN	HOVIC	COORDINATED WITH CONTRACTORS
BILL TABBERT	ANTHONY CRANE	EXECUTED MAJORITY OF RESTORATION
GEORGE THURLAND	ANTHONY CRANE	ASSEMBLED AND INSTALLED DOORS
RICARDO BROWNE	ANTHONY CRANE	INSTALLED EXHAUST SYSTEM
ROBERTO MEDINA	RECOVERY ROOM	OVERSAW BODY REPAIRS
JOSE TAPIA	SIGNCRAFTS	DID LOGO PAINTING
GREG VERMILYEA	AMERADA HESS	SUPPLIED ADVICE AND INFORMATION
WALTER CAMPBELL	AMERADA HESS	SUPPLIED ADVICE AND INFORMATION
PHIL PALUMBO	AMERADA HESS	SUPPLIED ADVICE AND INFORMATION
MARC RODGERS	AMERADA HESS	SUPPLIED INFORMATION





HESS

Hess inc.
FUEL OILS

1-3910









HESS

HESS

83601

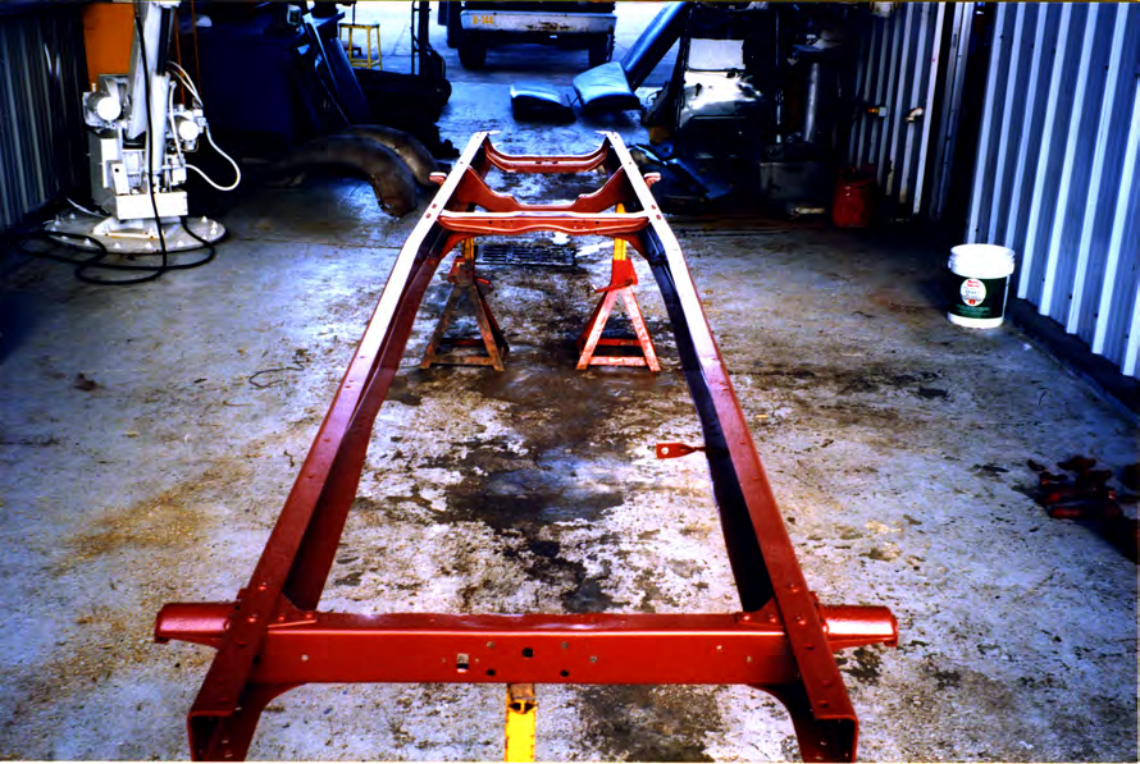
10 13 '87

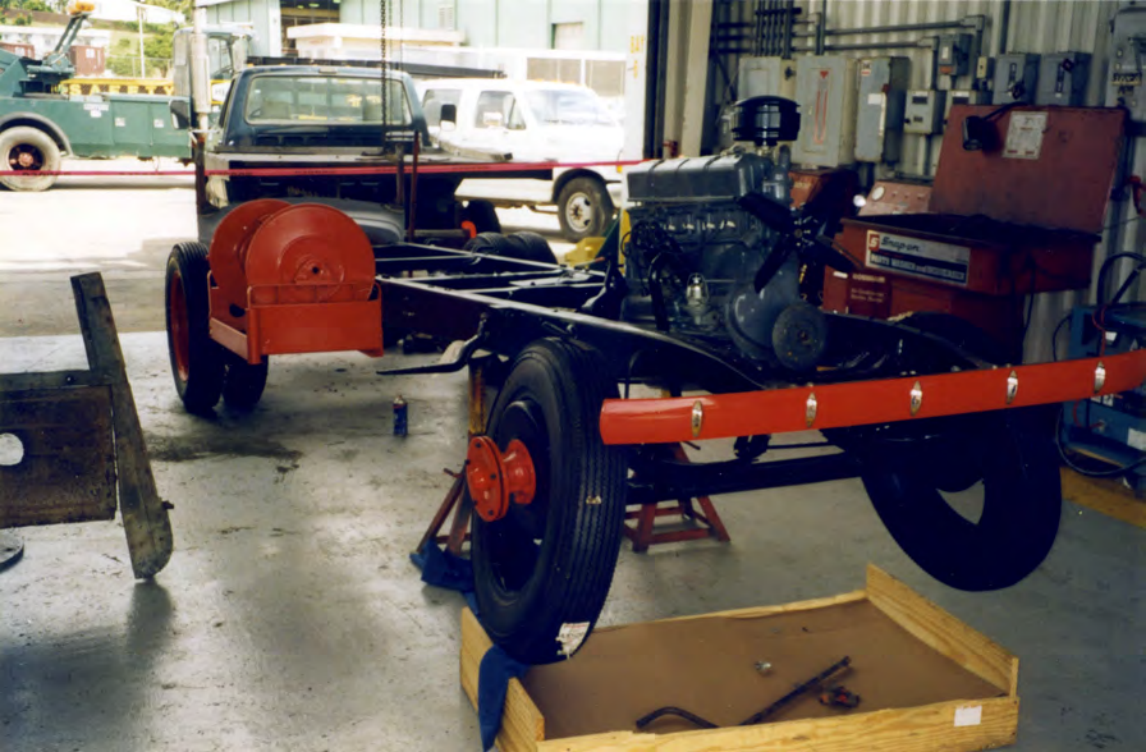


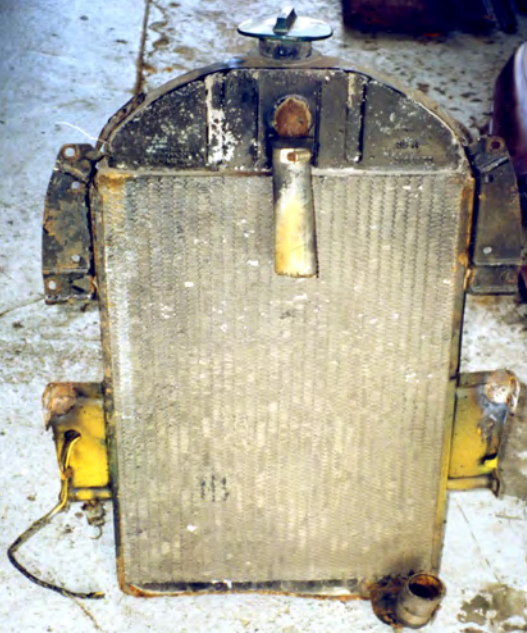


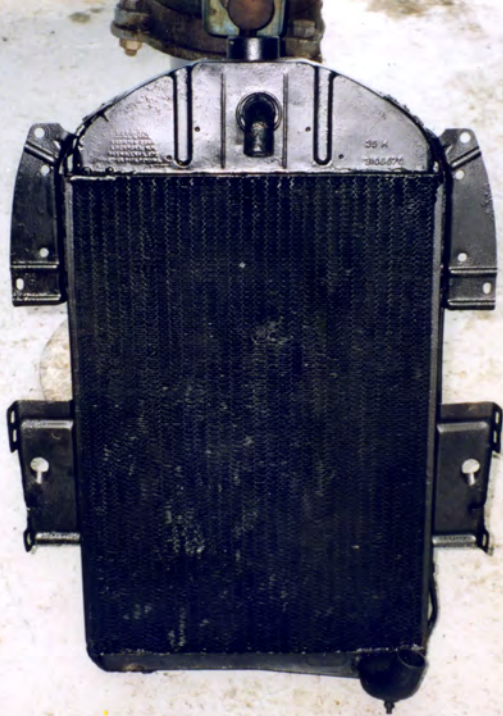


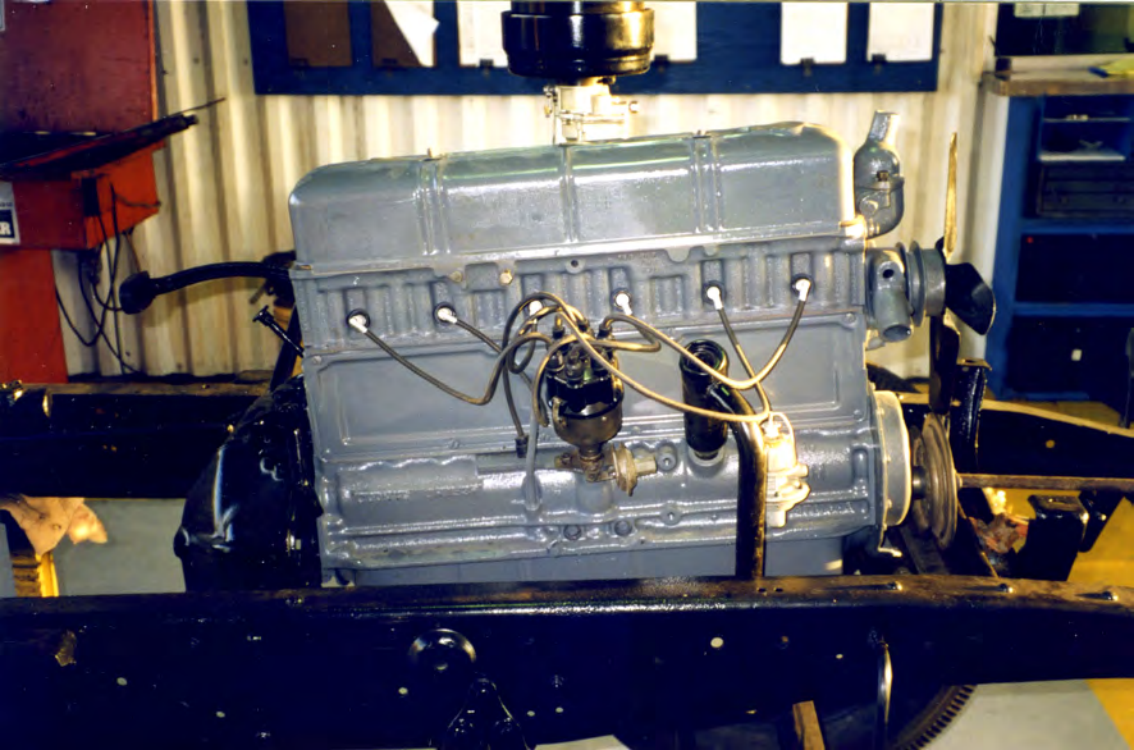


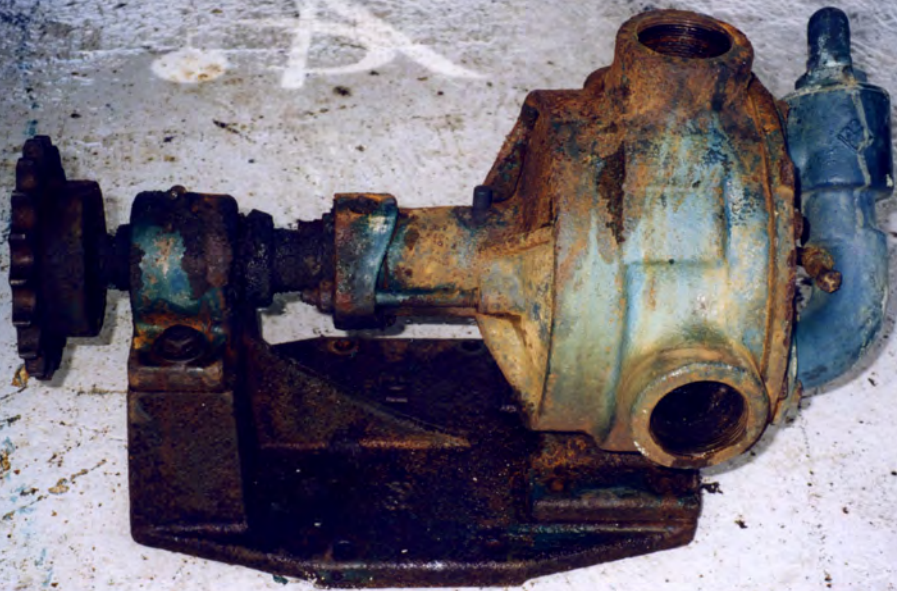


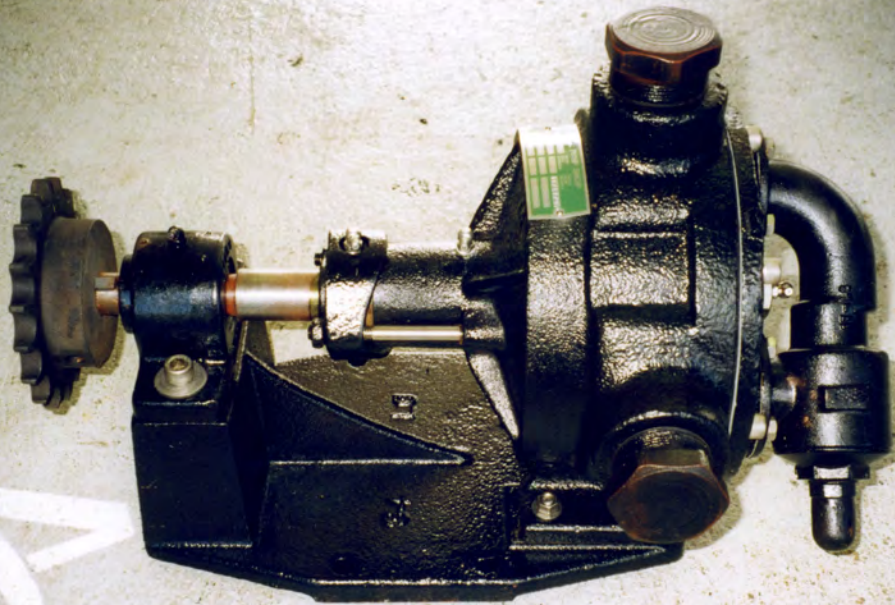


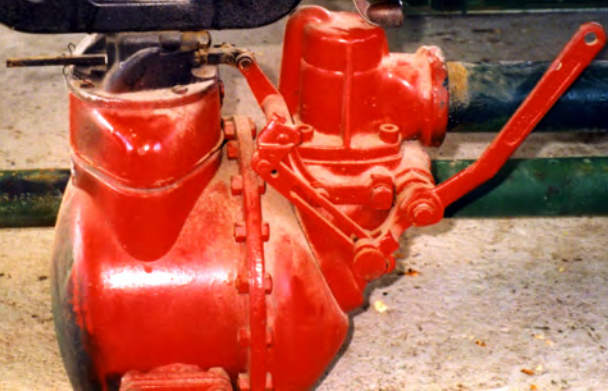


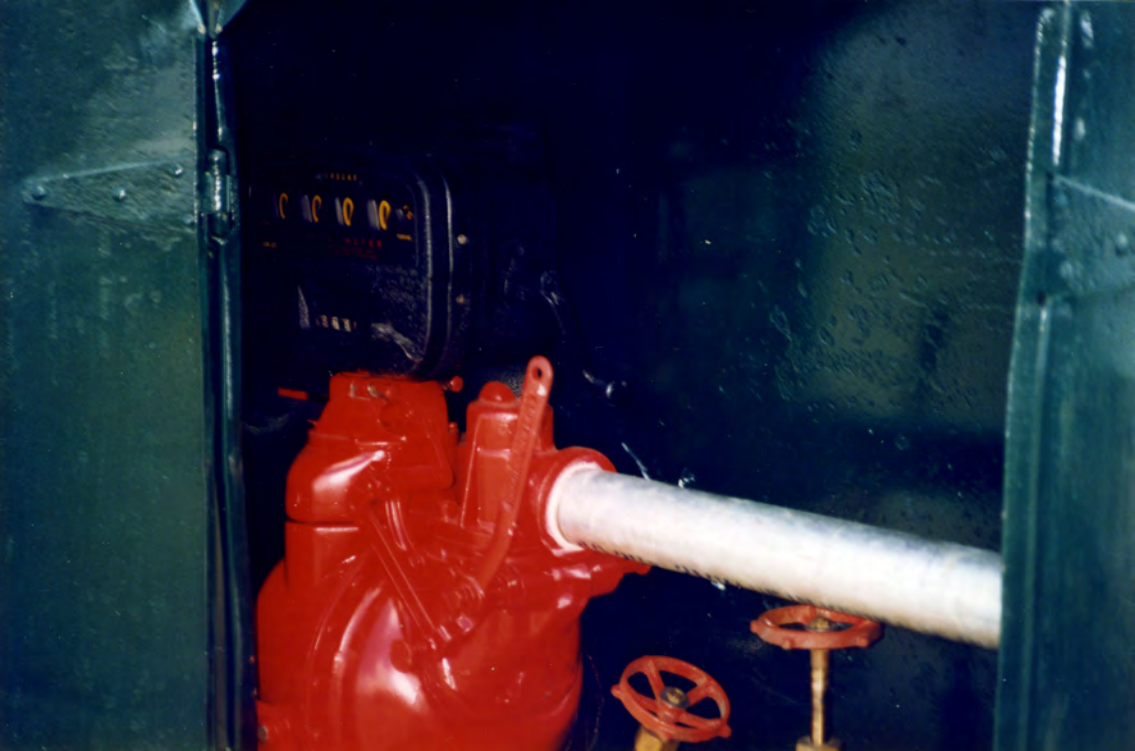














HESS

Hess inc.
FUEL OILS

I-3910



AUTHORIZED
PERSONNEL
ONLY







Hess INC.

FU